



Trade &
Investment
Mine Safety

NSW Mine Safety Summary Performance Report

2013-2014



Published by NSW Department of Trade and Investment, Regional Infrastructure and Services

NSW Mine Safety Summary Performance Report

First published January 2015

More information

1. Refer to [Appendix 8](#) for sources of data.
2. Frequency rates are per million hours worked.
3. Data is as at 25 November 2014.
4. All data is subject to continuous improvement due to internal audit and validation processes and updates from external sources. Incorrectly classified information from past years is sometimes found and reclassified in source databases in consultation with Mine Safety Operations. NSW Trade & Investment reporting employs the best available data at the time, which may differ from previously published figures. Workforce and lost time injury figures, which are used to produce frequency rates, may include some estimation and cross-referencing to external sources where data is incomplete or unavailable.

www.resourcesandenergy.nsw.gov.au/info/safety

TRIM Reference INT14/113634

© State of New South Wales through the Department of Trade and Investment, Regional Infrastructure and Services 2014.

This publication is copyright. You may download, display, print and reproduce this material in an unaltered form only (retaining this notice) for your personal use or for non-commercial use within your organisation. To copy, adapt, publish, distribute or commercialise any of this publication you will need to seek permission from the NSW Department of Trade and Investment, Regional Infrastructure and Services.

Disclaimer: The information contained in this publication is based on knowledge and understanding at the time of writing (January 2015). However, because of advances in knowledge, users are reminded of the need to ensure that information upon which they rely is up to date and to check currency of the information with the appropriate officer of the NSW Department of Trade and Investment, Regional Infrastructure and Services or the user's independent advisor.

Contents

1.	Introduction	5
2.	Hours worked.....	6
3.	Fatalities	9
3.1.	Fatalities by sector	9
3.2.	Annual fatal injury frequency rate (FIFR).....	10
3.3.	Five year average fatal injury frequency rate (FIFR).....	10
4.	Lost time injuries (LTIs)	11
4.1.	Lost time injuries by sector	11
4.2.	Annual lost time injury frequency rate (LTIFR).....	12
4.3.	Five year average lost time injury frequency rate (LTIFR)	13
5.	Total recordable injuries (TRIs)	15
5.1.	Total recordable injuries by sector.....	15
5.2.	Total recordable injuries by injury type	16
5.3.	Annual total recordable Injury frequency rate (TRIFR).....	18
6.	Serious bodily injuries (SBIs).....	20
6.1.	Serious bodily injuries by Sector	20
6.2.	Annual serious bodily injury frequency rate (SBIFR).....	21
6.3.	Five year average serious bodily injury frequency rate (SBIFR)	22
7.	Notifiable injury outcomes	24
7.1.	Notifiable injury outcomes by injury outcome	25
8.	Incidents	27
8.1.	All incidents.....	27
8.2.	Coal incidents	29
8.3.	Metalliferous incidents	30
8.4.	Extractives incidents	31
9.	Assessments	32
9.1.	All assessments by sector	32
9.2.	Assessments by event subtype	33
10.	Enforcement and advice/improvement notices	35
10.1.	All enforcement and advice notices by sector	35
10.2.	Enforcement and advice notices by notice category	36
Appendices – Additional information		38
Appendix 1	Mine types and mine operation types	38
Appendix 2	COMET incident event subtypes	39
Appendix 3	COMET incident types and relevant legislation.....	40

Appendix 4	Serious bodily injury types and relevant legislation	41
Appendix 5	Notifiable injury outcomes and relevant legislation.....	42
Appendix 6	COMET assessment event subtypes	44
Appendix 7	Enforcement and advice/improvement notice categories and relevant legislation.....	45
Appendix 8	Sources of data.....	46

Figures

Figure 1	Coal, Metalliferous & Extractives hours worked 2004-05 to 2013-14	6
Figure 2	Coal hours worked 2004-05 to 2013-14	7
Figure 3	Metalliferous & Extractives hours worked 2004-05 to 2013-14	7
Figure 4	Metalliferous hours worked 2004-05 to 2013-14	8
Figure 5	Extractives hours worked 2004-05 to 2013-14	8
Figure 6	All fatalities by sector 2004-05 to 2013-14	9
Figure 7	Coal, Metalliferous & Extractives annual fatal injury frequency rate (FIFR) 2004-05 to 2013-14	10
Figure 8	Coal, Metalliferous & Extractives Mining 5 year average fatal injury frequency rate (FIFR) 2004-05 to 2013-14	10
Figure 9	Coal, Metalliferous & Extractives lost time injuries by sector 2004-05 to 2013-14	11
Figure 10	Coal, Metalliferous & Extractives annual lost time injury frequency rate (LTIFR) 2004-05 to 2013-14	12
Figure 11	Coal Annual Lost Time Injury Frequency Rate (LTIFR) 2004-05 to 2013-14	12
Figure 12	Metalliferous and Extractives Annual Lost Time Injury Frequency Rate (LTIFR) 2004-05 to 2013-14	13
Figure 13	Coal, Metalliferous & Extractives Mining 5 year average lost time injury frequency rate (LTIFR) 2004-05 to 2013-14	13
Figure 14	Coal Mining 5 year average lost time injury frequency rate (LTIFR) 2004-05 to 2013-14	14
Figure 15	Metalliferous & Extractives Mining 5 year average lost time injury frequency rate (LTIFR) 2004-05 to 2013-14	14
Figure 16	Coal, Metalliferous & Extractives total recordable injuries (TRIs) 2008-09 to 2013-14	15
Figure 17	Coal total recordable injuries (TRIs) by injury type 2008-09 to 2013-14	16
Figure 18	Metalliferous Total Recordable Injuries (TRIs) by Injury Type 2008-09 to 2013-14	16
Figure 19	Extractives Total Recordable Injuries (TRIs) by Injury Type 2008-09 to 2013-14	17
Figure 20	Coal, Metalliferous & Extractives annual total recordable injury frequency rate (TRIFR) 2007-08 to 2013-14	18
Figure 21	Coal annual total recordable injury frequency rate (TRIFR) 2007-08 to 2013-14	18
Figure 22	Metalliferous & Extractives annual total recordable injury frequency rate (TRIFR) 2007-08 to 2013-14	19
Figure 23	Coal, Metalliferous & Extractives serious bodily injuries 2004-05 to 2013-14	20
Figure 24	Coal, Metalliferous & Extractives annual serious bodily injury frequency rate (SBIFR) 2004-05 to 2013-14	21
Figure 25	Coal annual serious bodily injury frequency rate (SBIFR) 2004-05 to 2013-14	21
Figure 26	Metalliferous and Extractives annual serious bodily injury frequency rate (SBIFR) 2004-05 to 2013-14	22
Figure 27	Coal, Metalliferous & Extractives Mining 5 year average serious bodily injury frequency rate (SBIFR) 2004-05 to 2013-14	22
Figure 28	Coal 5 year average serious bodily injury frequency rate (SBIFR) 2004-05 to 2013-14	23

Figure 29	Metalliferous and Extractives 5 year average serious bodily injury frequency rate (SBIFR) 2004-05 to 2013-14.....	23
Figure 30	Coal and Non-coal (excl Petroleum) notifiable injury outcomes 2006-07 to 2013-14.....	25
Figure 31	Coal notifiable injury outcomes 2nd quarter 2006-07 to 2013-14.....	25
Figure 32	Metalliferous notifiable injury outcomes 2nd quarter 2006-07 to 2013-14.....	26
Figure 33	Extractives notifiable injury outcomes 2nd quarter 2006-07 to 2013-14.....	26
Figure 34	All incidents by sector 2004-05 to 2013-14.....	27
Figure 35	All incidents by event subtype 2004-05 to 2013-14.....	28
Figure 36	All incidents by investigation level 2004-05 to 2013-14.....	28
Figure 37	Coal incidents by event subtype 2004-05 to 2013-14.....	29
Figure 38	Coal incidents by investigation level 2004-05 to 2013-14.....	29
Figure 39	Metalliferous incidents by event subtype 2004-05 to 2013-14.....	30
Figure 40	Metalliferous incidents by investigation level 2004-05 to 2013-14.....	30
Figure 41	Extractives incidents by event subtype 2004-05 to 2013-14.....	31
Figure 42	Extractives incidents by investigation level 2004-05 to 2013-14.....	31
Figure 43	All assessments by sector 2004-05 to 2013-14.....	32
Figure 44	All assessments by event subtype 2004-05 to 2013-14.....	33
Figure 45	Coal assessments by event subtype 2004-05 to 2013-14.....	33
Figure 46	Metalliferous assessments by event subtype 2004-05 to 2013-14.....	34
Figure 47	Extractives assessments by event subtype 2004-05 to 2013-14.....	34
Figure 48	All enforcement and advice/improvement notices by sector 2004-05 to 2013-14.....	35
Figure 49	All enforcement and advice/improvement notices by notice category 2004-05 to 2013-14....	36
Figure 50	Coal enforcement and advice/improvement notices by notice category 2004-05 to 2013-14	36
Figure 51	Metalliferous enforcement and advice/improvement notices by notice category 2004-05 to 2013-14.....	37
Figure 52	Extractives enforcement & advice/improvement notices by category 2004-05 to 2013-14....	37
Figure 53	Mine types.....	38
Figure 54	Mine operation types.....	38
Figure 55	COMET incident event subtypes.....	39
Figure 56	COMET incident types under former and current legislation.....	40
Figure 57	Coal serious bodily injury (SBI) clauses under former and current legislation.....	41
Figure 58	Non-Coal serious injury (SI) clauses under former and current legislation.....	41
Figure 59	Petroleum (Onshore) serious injury (SI) clauses under current legislation.....	41
Figure 60	Notifiable injury outcomes under current legislation.....	42
Figure 61	COMET assessment event subtypes.....	44
Figure 62	Enforcement and advice/improvement notice categories and types.....	45
Figure 63	Sources of data.....	46

Introduction

This report provides a breakdown of hours worked, fatalities, lost time injuries, total recordable injuries, serious bodily injuries and injury outcomes that were notified to NSW Trade & Investment by the NSW Mining and Extractives industry.

It includes annual frequency rates for fatalities, lost time injuries and serious bodily injuries and corresponding five year average frequency rates.

The report also includes a breakdown of enforcement and advice notices issued by NSW Trade & Investment.

Important note regarding the source of hours worked, lost time injuries and frequency rates

Coal hours worked and lost time injuries were sourced from Coal Services Pty Ltd until 2006-07 and from Quarterly Workplace Injury Reports reported to NSW Trade & Investment from 2007-08 onwards.

Metalliferous and Extractives hours worked and lost time injuries were compiled from several sources (see Appendix 6) until 2008-09 and included some estimation. From 2009-10, Metalliferous and Extractives hours worked, lost time injuries, medical treatment injuries and restricted duty injuries are sourced from Quarterly Workplace Injury Reports as supplied to NSW Trade & Investment.

It is thought likely that mines under-report lost time injuries to non-employees such as contractors, unless the injured worker's external employer has advised the mine of any lost time.

These factors should be considered when comparing lost time injuries before and after the change in the method of data collection.

Note that in order to ensure accuracy, hours worked and frequency rates are only updated for a complete financial year following an annual audit of quarterly workplace injury data.

1. Hours worked

This section provides details of hours worked in the Coal, Metalliferous and Extractives mining sectors only, as hours worked cannot be reliably sourced for the Non-Coal Other and Petroleum (Onshore) mining sectors.

Due to legislative changes, these details became reportable to NSW Trade & Investment on Quarterly Workplace Injury Reports for Coal, under CMHSR 2006 Clause 206, from the beginning of 2007-08 and for Non-Coal, under MHSR 2007 Clause 155, from the second quarter of 2008-09.

Figure 1
Coal, Metalliferous & Extractives hours worked 2004-05 to 2013-14

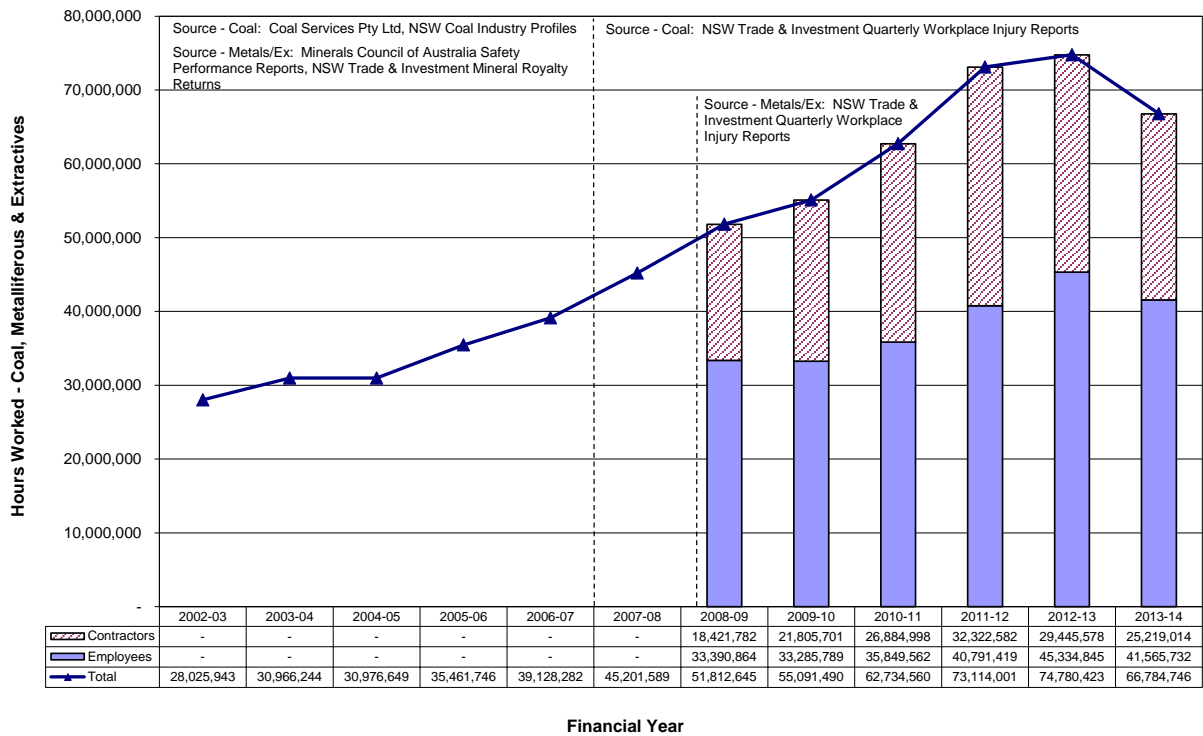


Figure 2
Coal hours worked 2004-05 to 2013-14

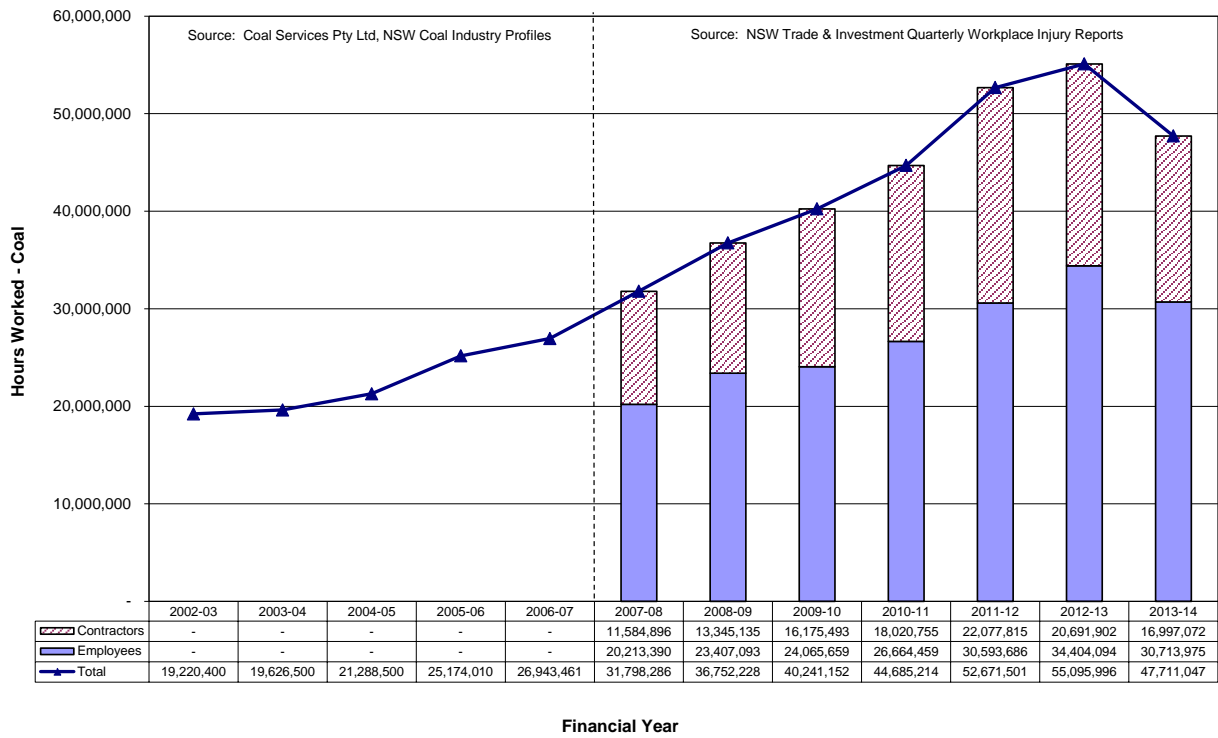


Figure 3
Metalliferous & Extractives hours worked 2004-05 to 2013-14

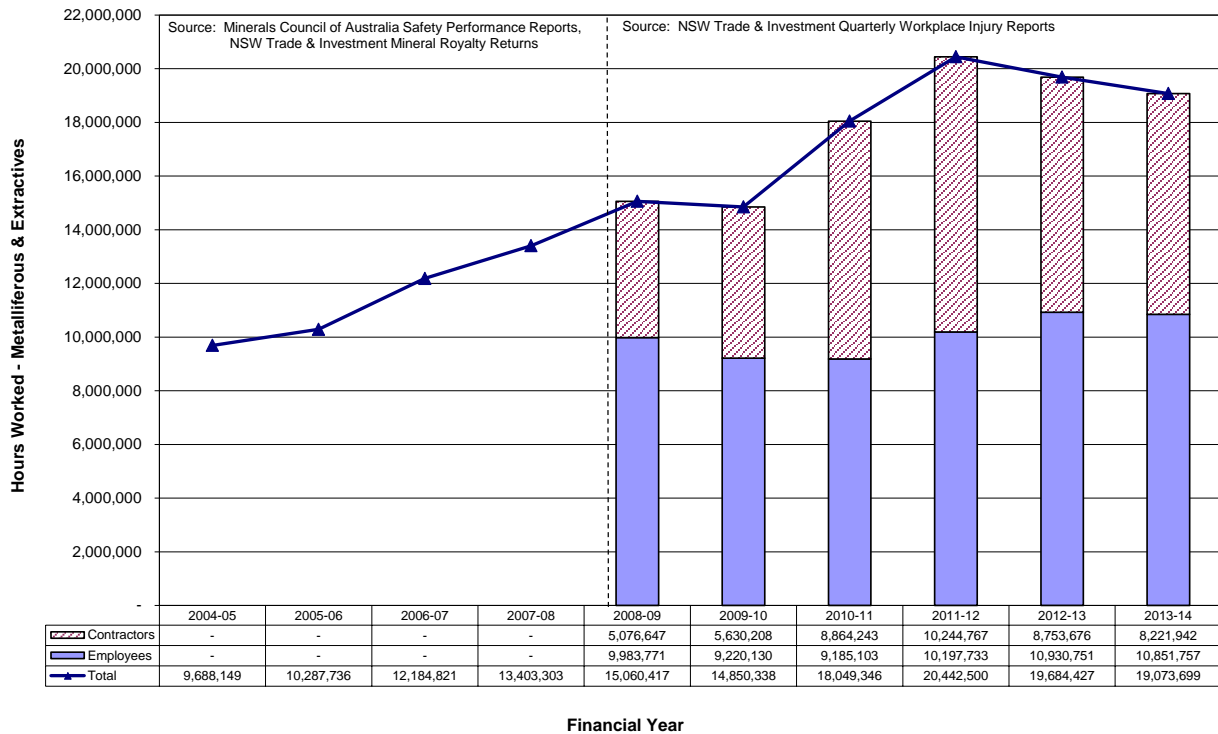


Figure 4
Metalliferous hours worked 2004-05 to 2013-14

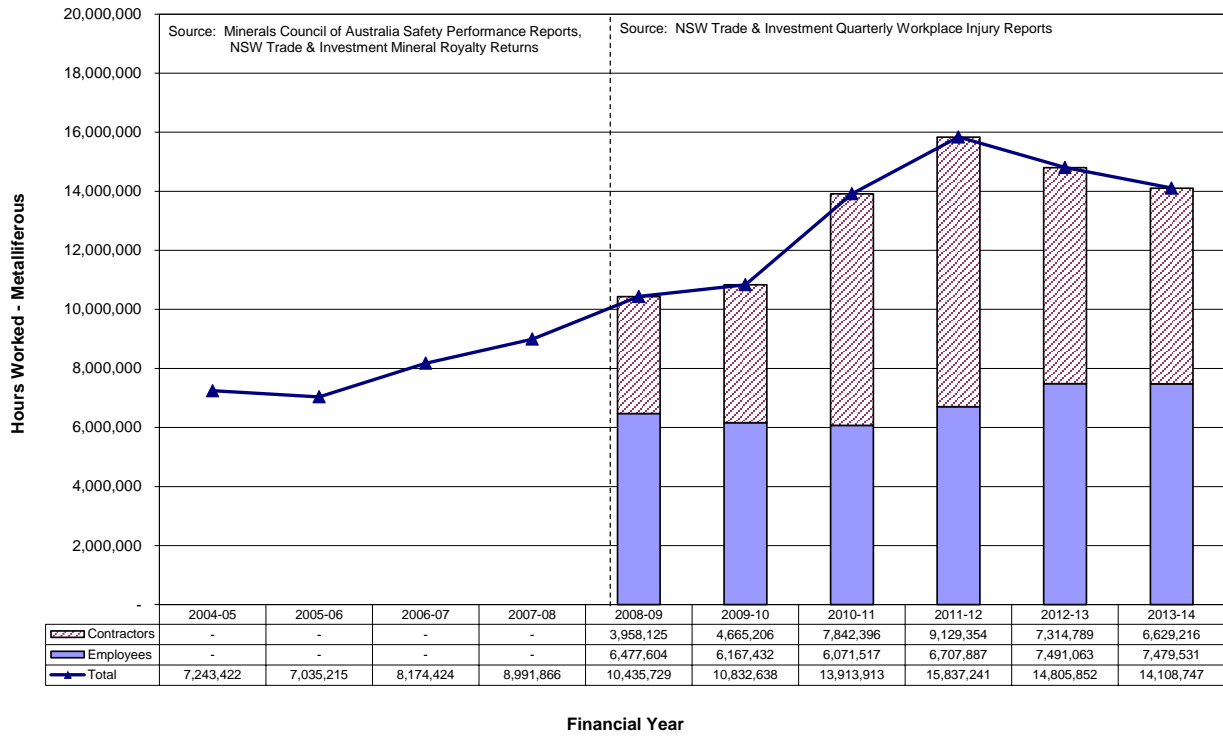
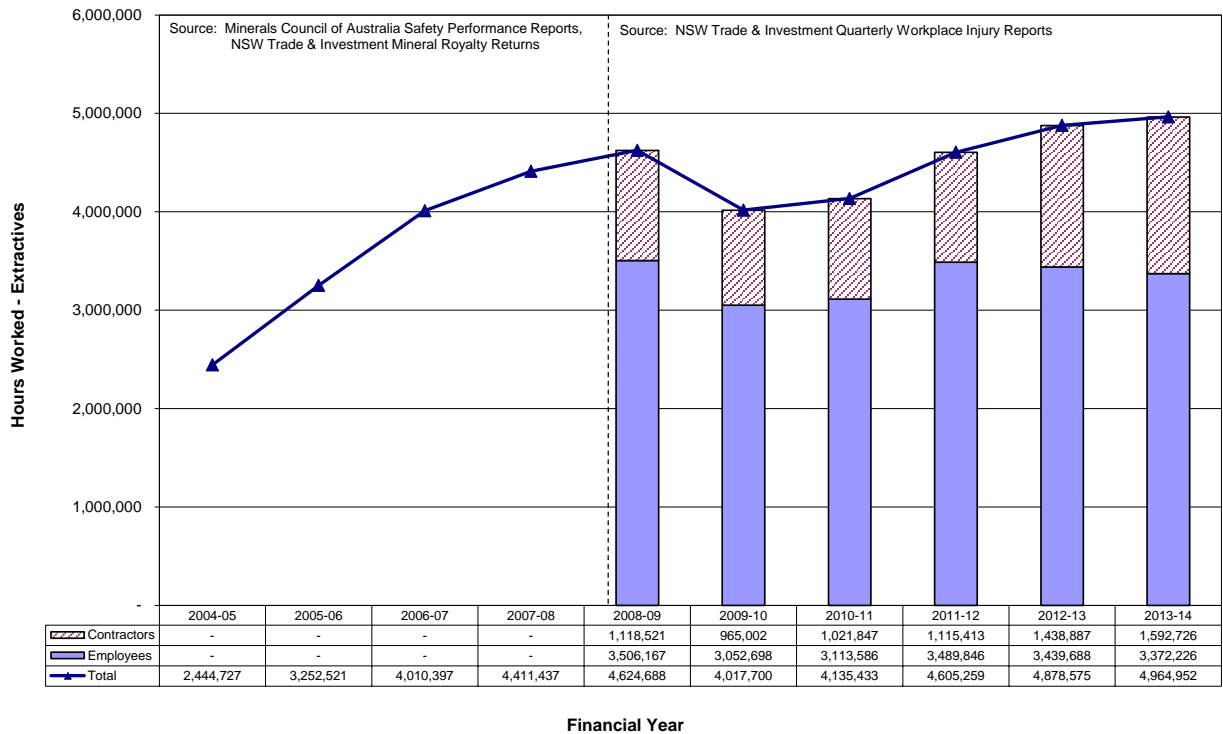


Figure 5
Extractives hours worked 2004-05 to 2013-14



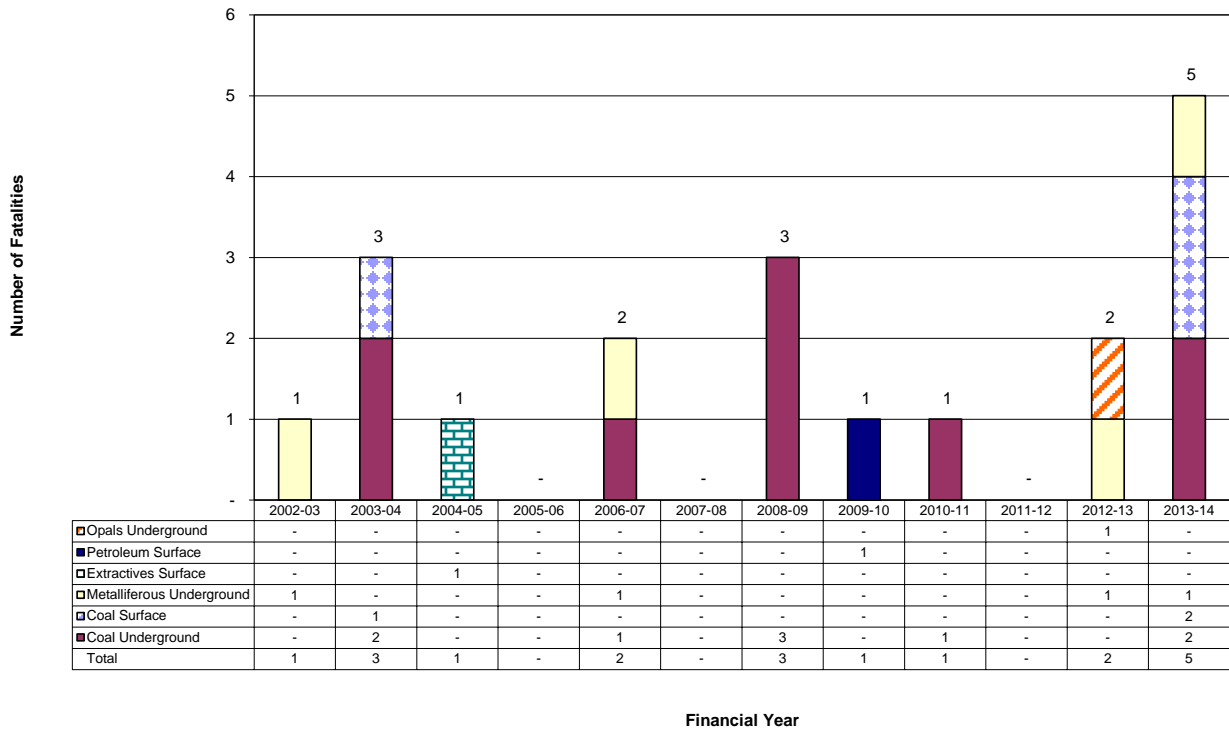
2. Fatalities

This section provides a breakdown of fatalities in the NSW Mining and Extractives industry.

While the extractives sector was fatality free in 2013-14, there was one fatality in the metalliferous underground sector and two fatalities in each of the coal surface and underground sectors.

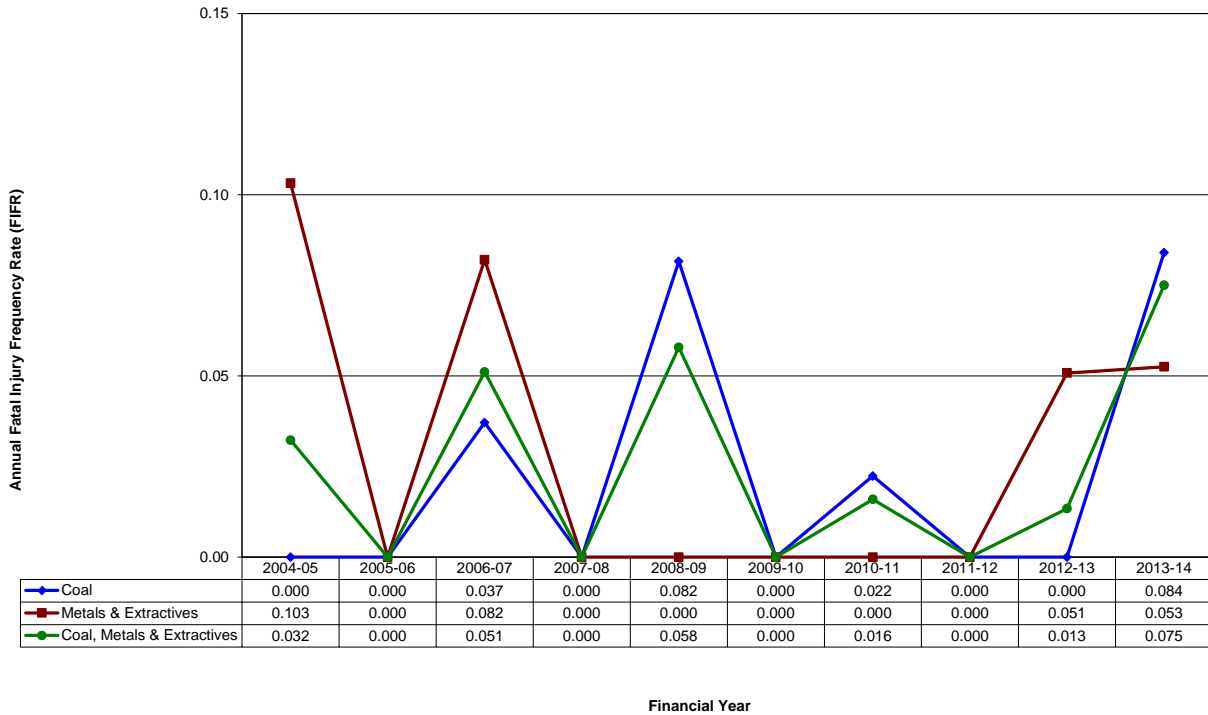
2.1. Fatalities by sector

Figure 6
All fatalities by sector 2004-05 to 2013-14



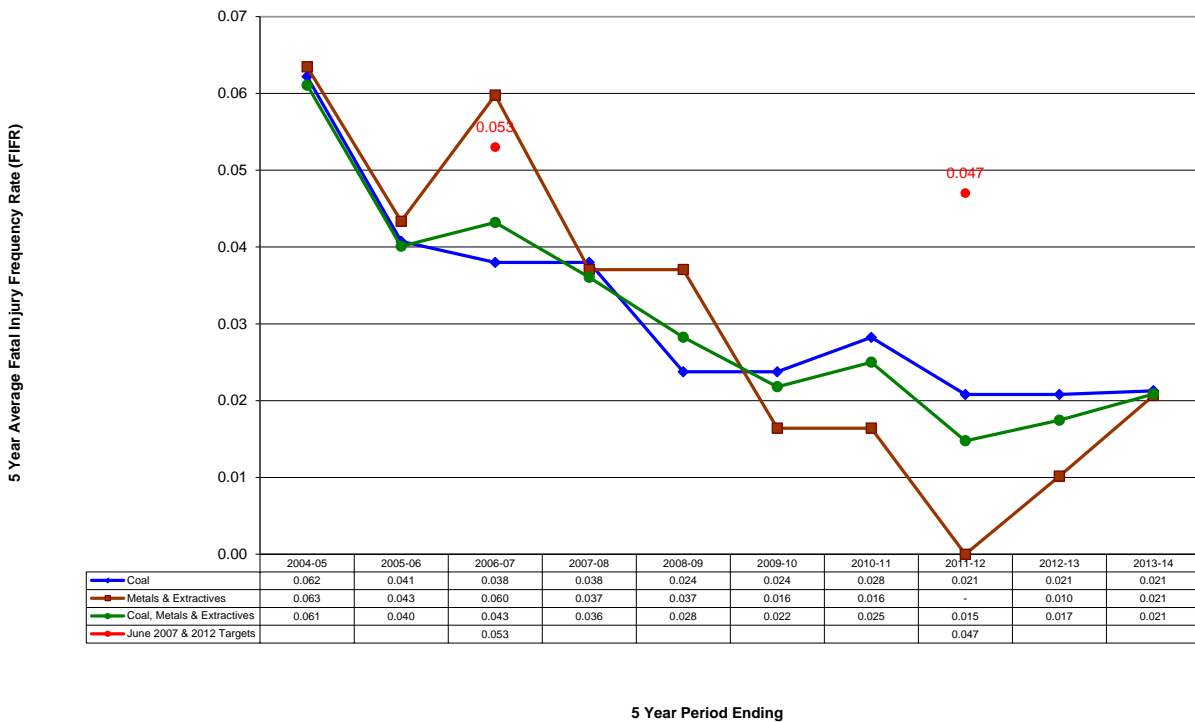
2.2. Annual fatal injury frequency rate (FIFR)

Figure 7
Coal, Metalliferous & Extractives annual fatal injury frequency rate (FIFR) 2004-05 to 2013-14



2.3. Five year average fatal injury frequency rate (FIFR)

Figure 8
Coal, Metalliferous & Extractives Mining 5 year average fatal injury frequency rate (FIFR) 2004-05 to 2013-14
June 2012 National target was 0.047



3. Lost time injuries (LTIs)

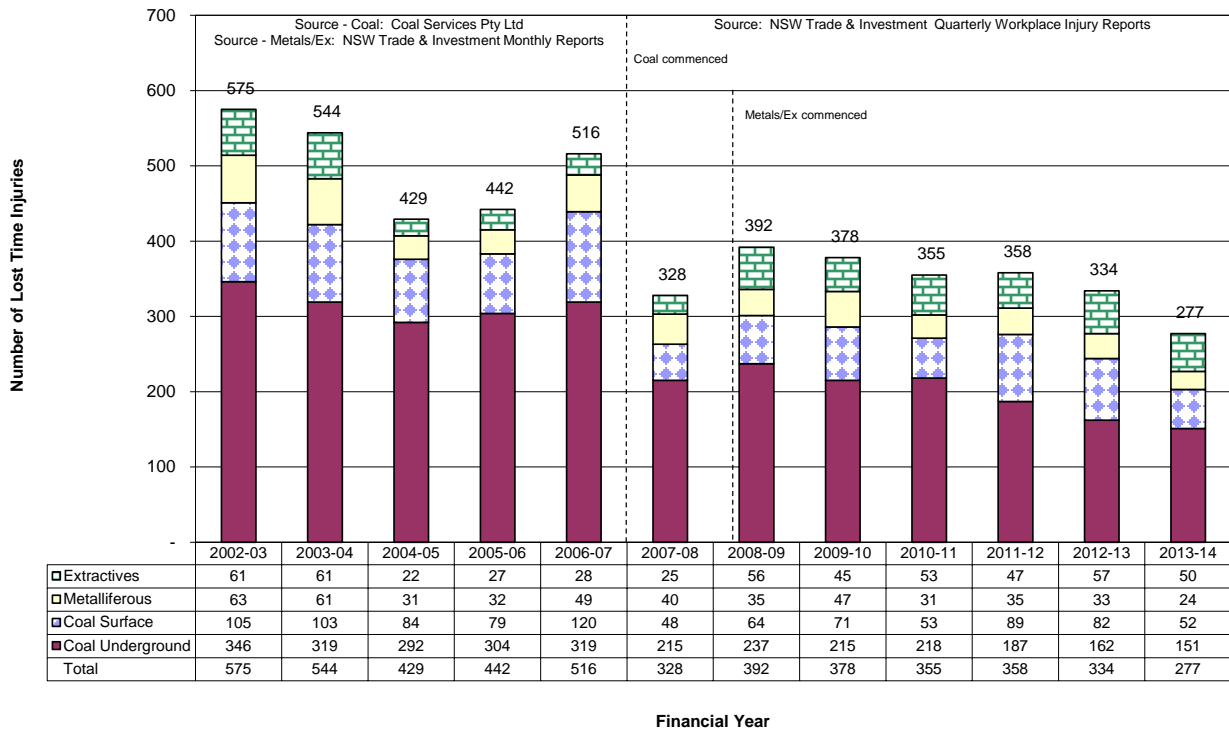
This section provides a breakdown of lost time injuries (LTIs) in the Coal, Metalliferous and Extractives sectors. A lost time injury is an injury that results in a minimum of one full shift's absence.

Due to legislative changes, these details became reportable to NSW Trade & Investment on Quarterly Workplace Injury Reports for Coal, under CMHSR 2006 Clause 206, from the beginning of 2007-08 and for Non-Coal, under MHSR 2007 Clause 155, from the second quarter of 2008-09.

Refer to “Important note regarding the source of hours worked and lost time injuries” in Section 1 Introduction

3.1. Lost time injuries by sector

Figure 9
Coal, Metalliferous & Extractives lost time injuries by sector 2004-05 to 2013-14



3.2. Annual lost time injury frequency rate (LTIFR)

Figure 10
Coal, Metalliferous & Extractives annual lost time injury frequency rate (LTIFR) 2004-05 to 2013-14

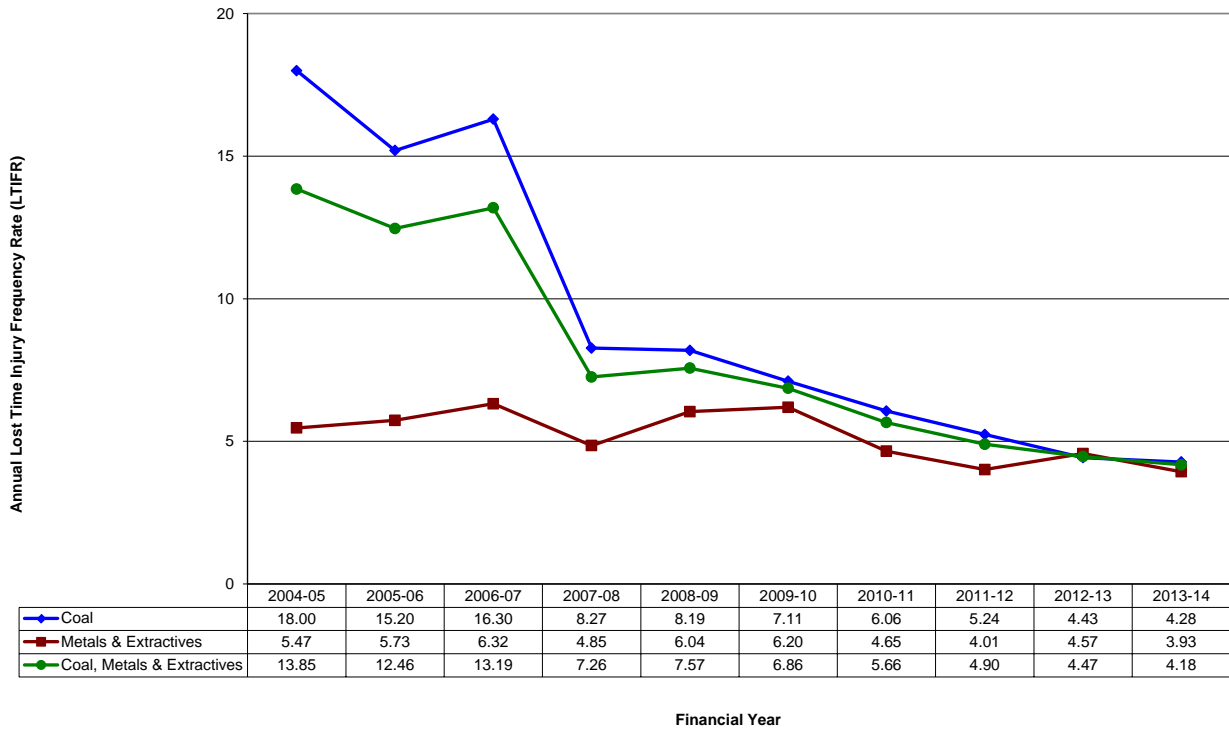


Figure 11
Coal Annual Lost Time Injury Frequency Rate (LTIFR) 2004-05 to 2013-14

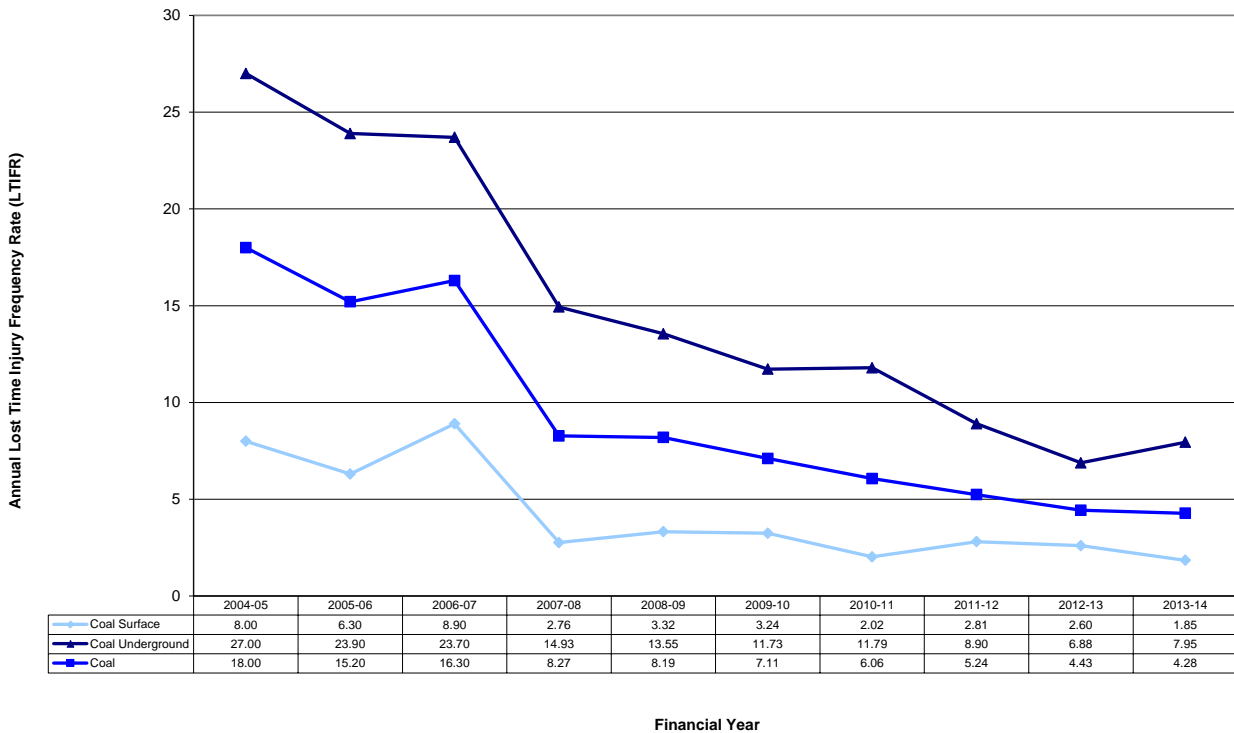
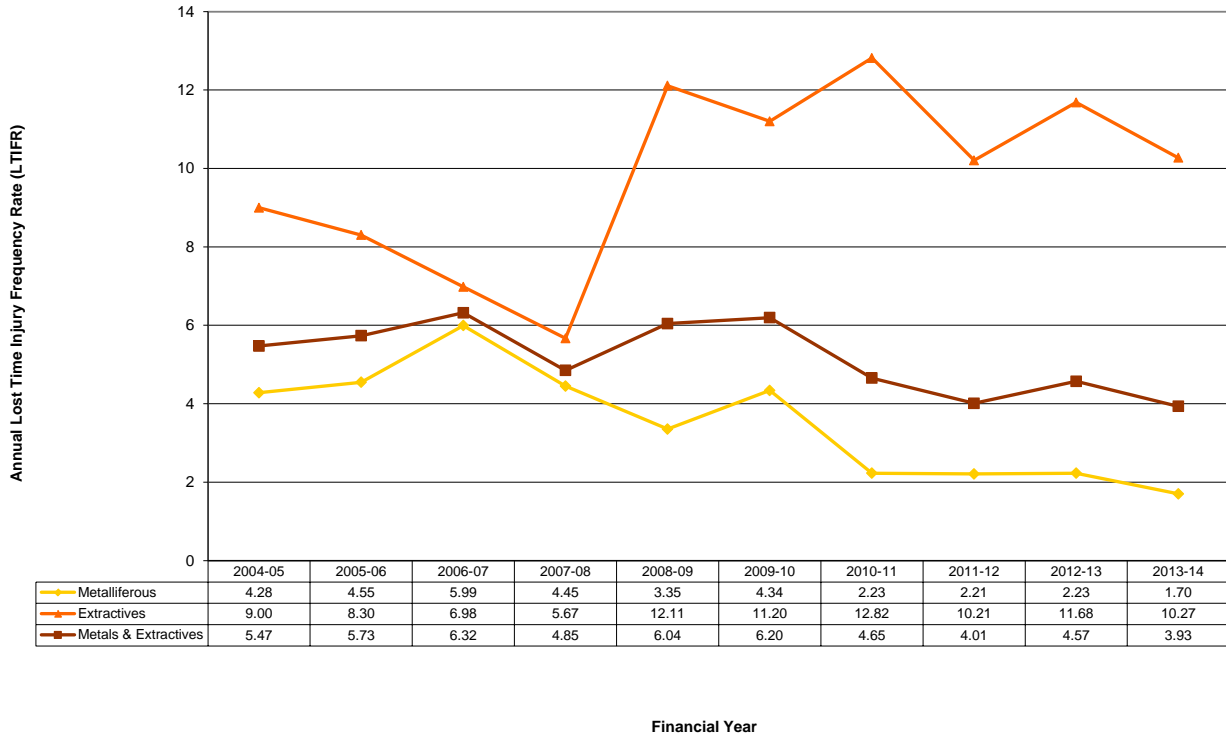


Figure 12
Metalliferous and Extractives Annual Lost Time Injury Frequency Rate (LTIFR) 2004-05 to 2013-14



3.3. Five year average lost time injury frequency rate (LTIFR)

Figure 13
Coal, Metalliferous & Extractives Mining 5 year average lost time injury frequency rate (LTIFR) 2004-05 to 2013-14

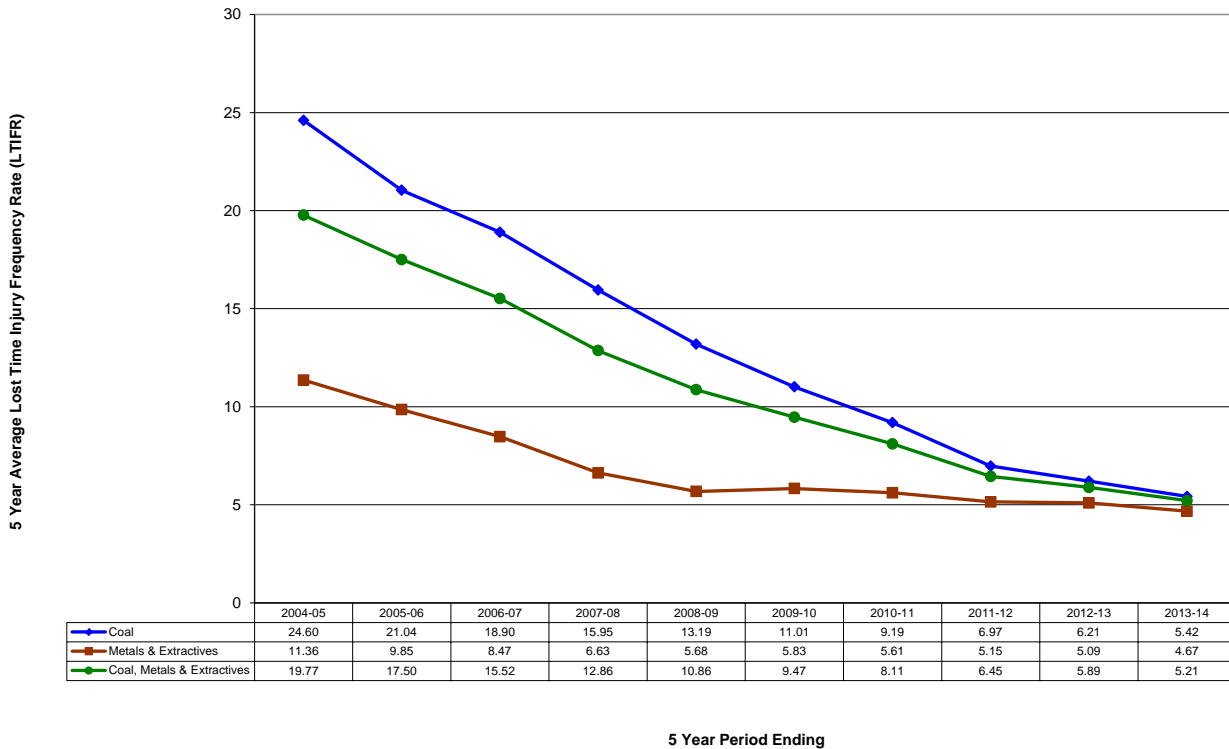


Figure 14
Coal Mining 5 year average lost time injury frequency rate (LTIFR) 2004-05 to 2013-14

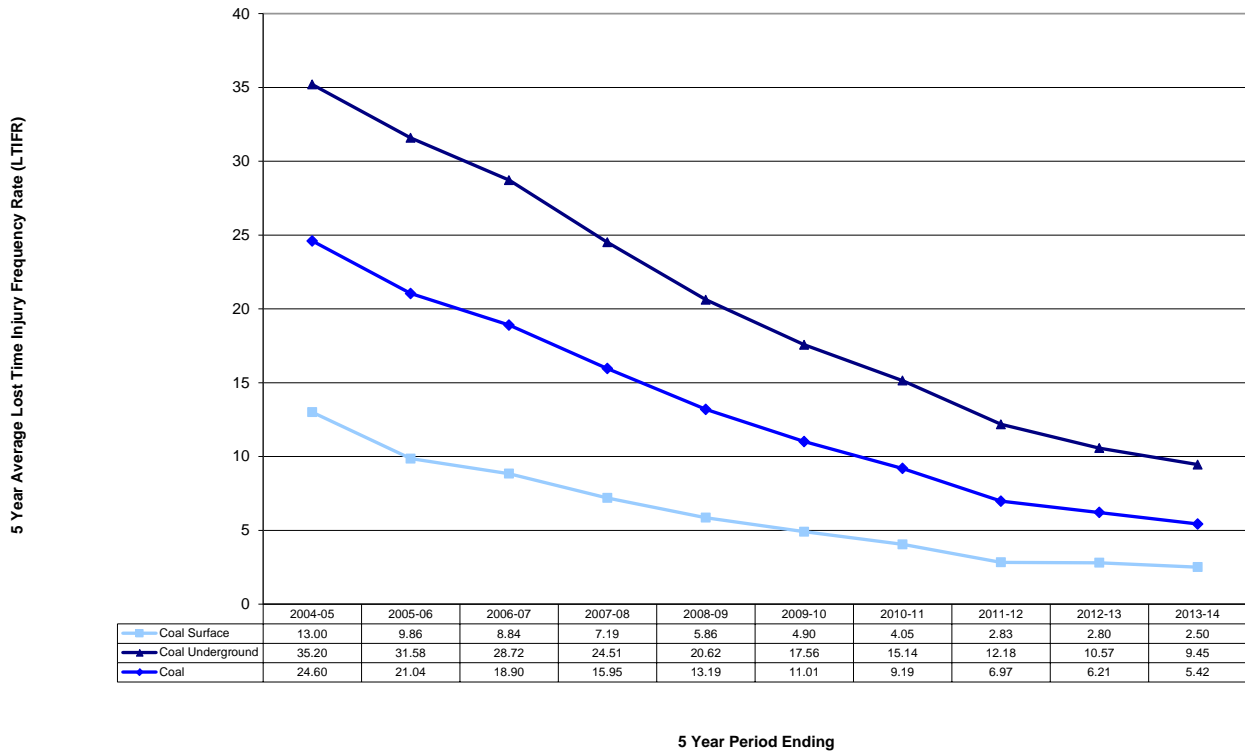
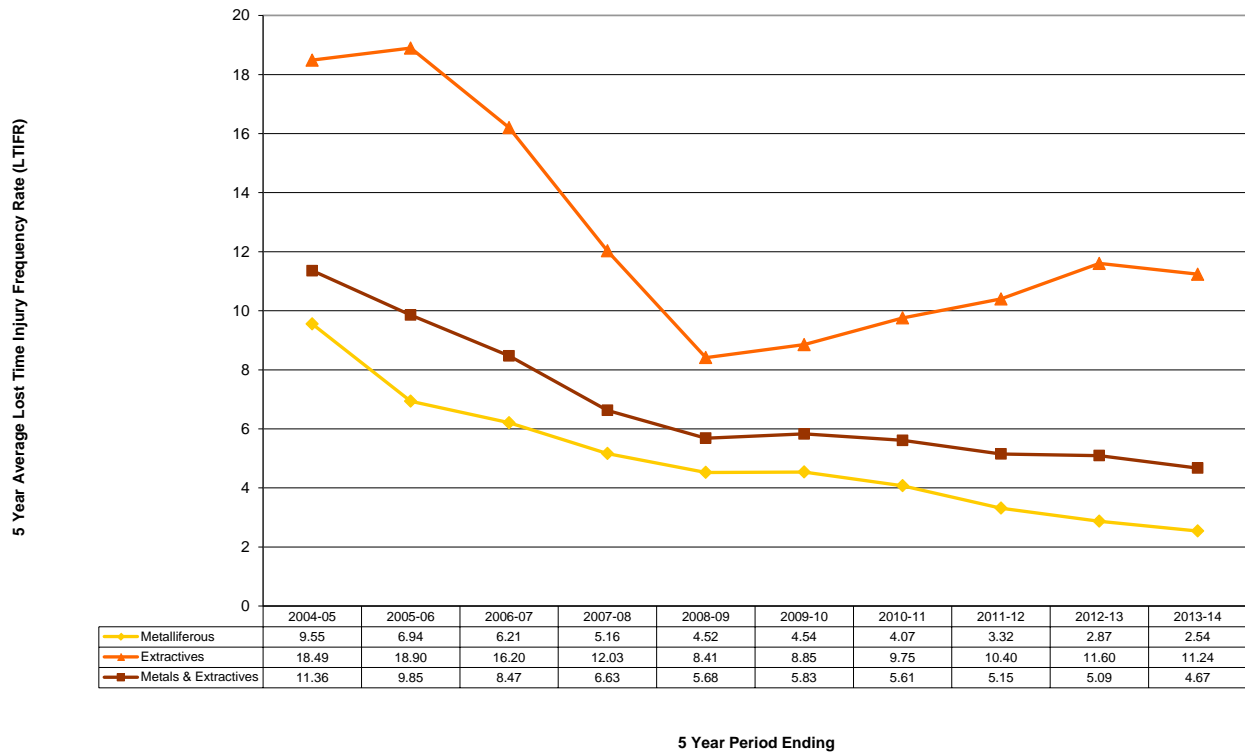


Figure 15
Metalliferous & Extractives Mining 5 year average lost time injury frequency rate (LTIFR) 2004-05 to 2013-14



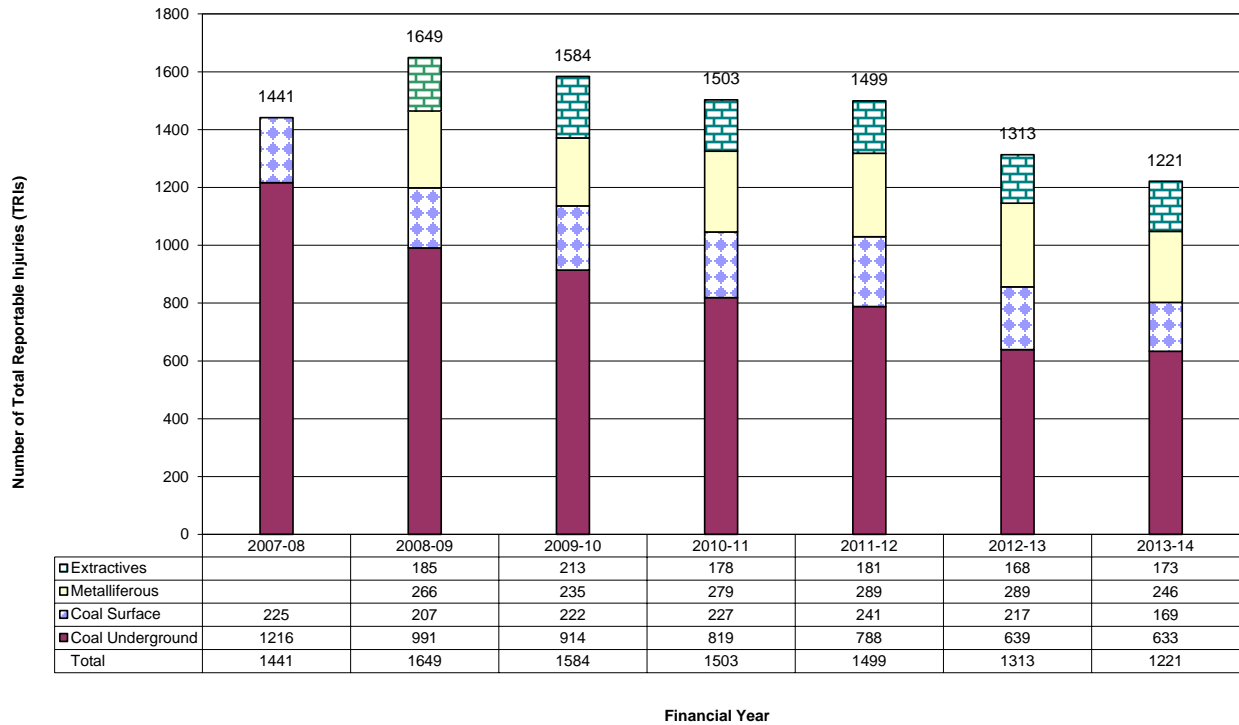
4. Total recordable injuries (TRIs)

This section provides a breakdown of the total recordable injuries in the Coal, Metalliferous and Extractives sectors. Total Recordable Injuries (TRIs) are the total number of fatalities and injuries resulting in lost time (LTI), restricted duties (RDI) or medical treatment (MTI).

Due to legislative changes, these details became uniformly reportable to NSW Trade & Investment on Quarterly Workplace Injury Reports for Coal, under CMHSR 2006 Clause 206, from the beginning of 2007-08 and for Non-Coal, under MHSR 2007 Clause 155, from the second quarter of 2008-09.

4.1. Total recordable injuries by sector

Figure 16
Coal, Metalliferous & Extractives total recordable injuries (TRIs) 2008-09 to 2013-14



4.2. Total recordable injuries by injury type

Figure 17
Coal total recordable injuries (TRIs) by injury type 2008-09 to 2013-14

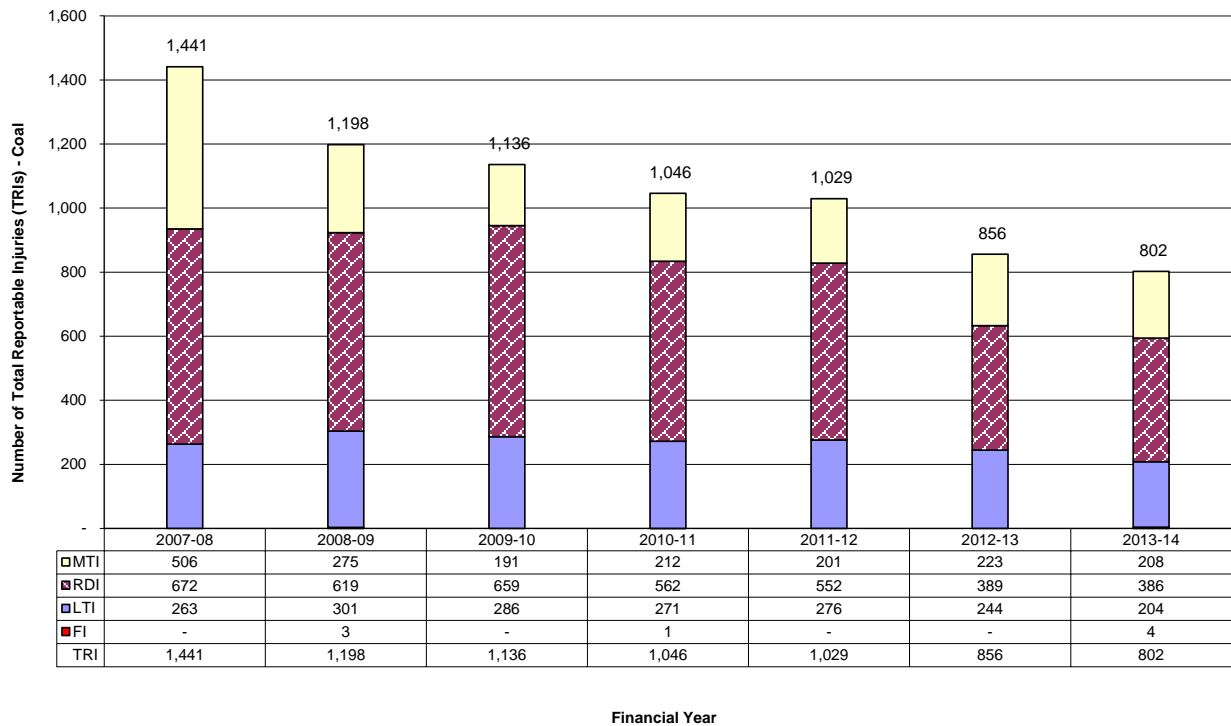


Figure 18
Metalliferous Total Recordable Injuries (TRIs) by Injury Type 2008-09 to 2013-14

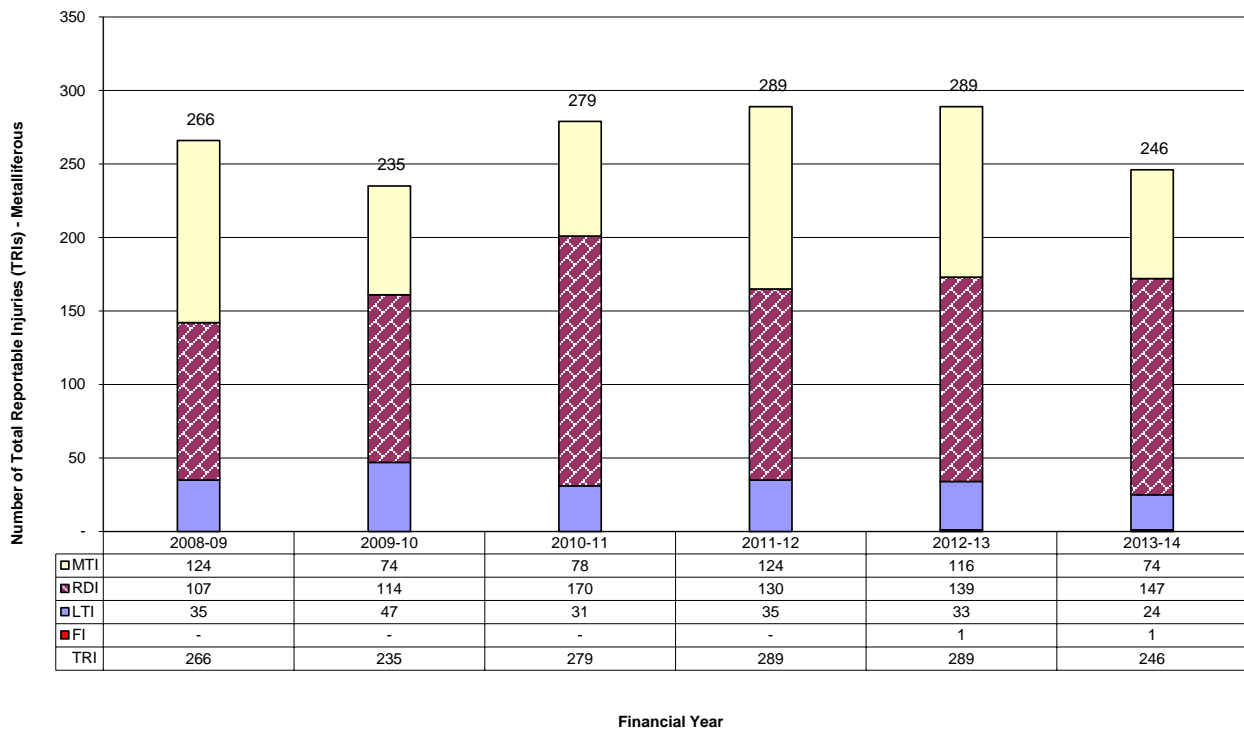
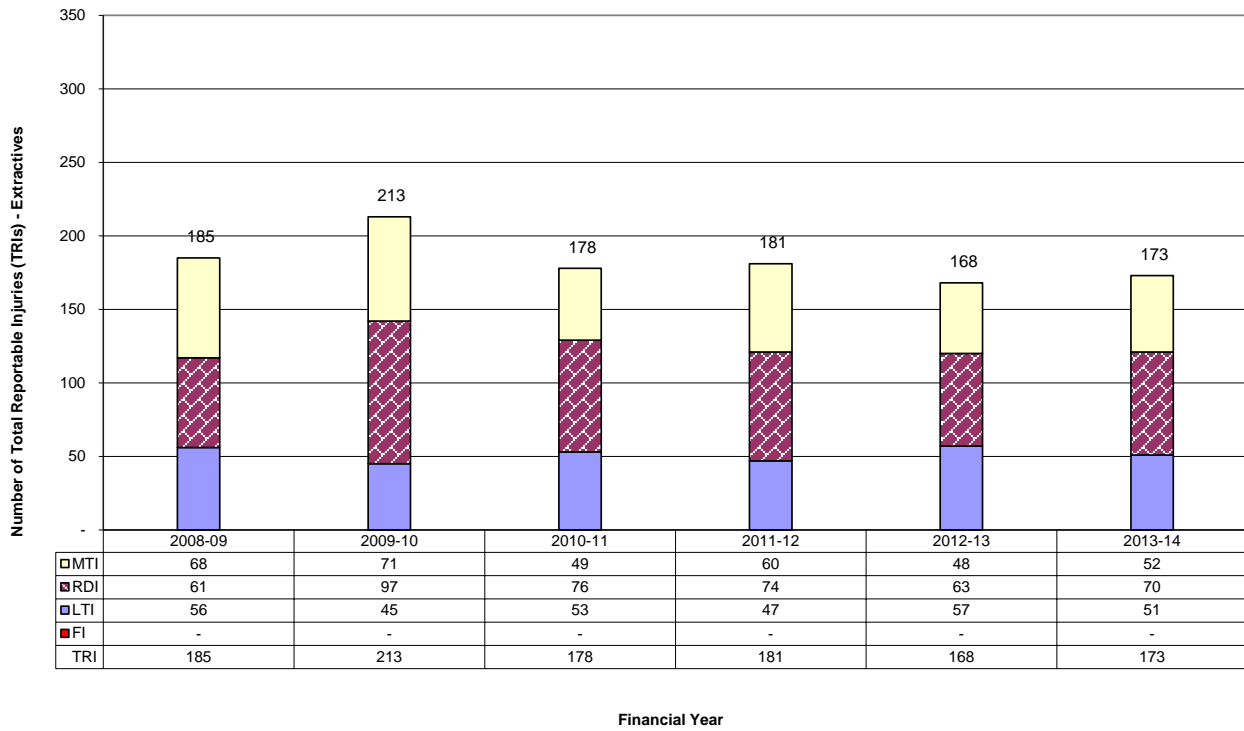


Figure 19
Extractives Total Recordable Injuries (TRIs) by Injury Type 2008-09 to 2013-14



4.3. Annual total recordable Injury frequency rate (TRIFR)

Figure 20
Coal, Metalliferous & Extractives annual total recordable injury frequency rate (TRIFR) 2007-08 to 2013-14



Figure 21
Coal annual total recordable injury frequency rate (TRIFR) 2007-08 to 2013-14

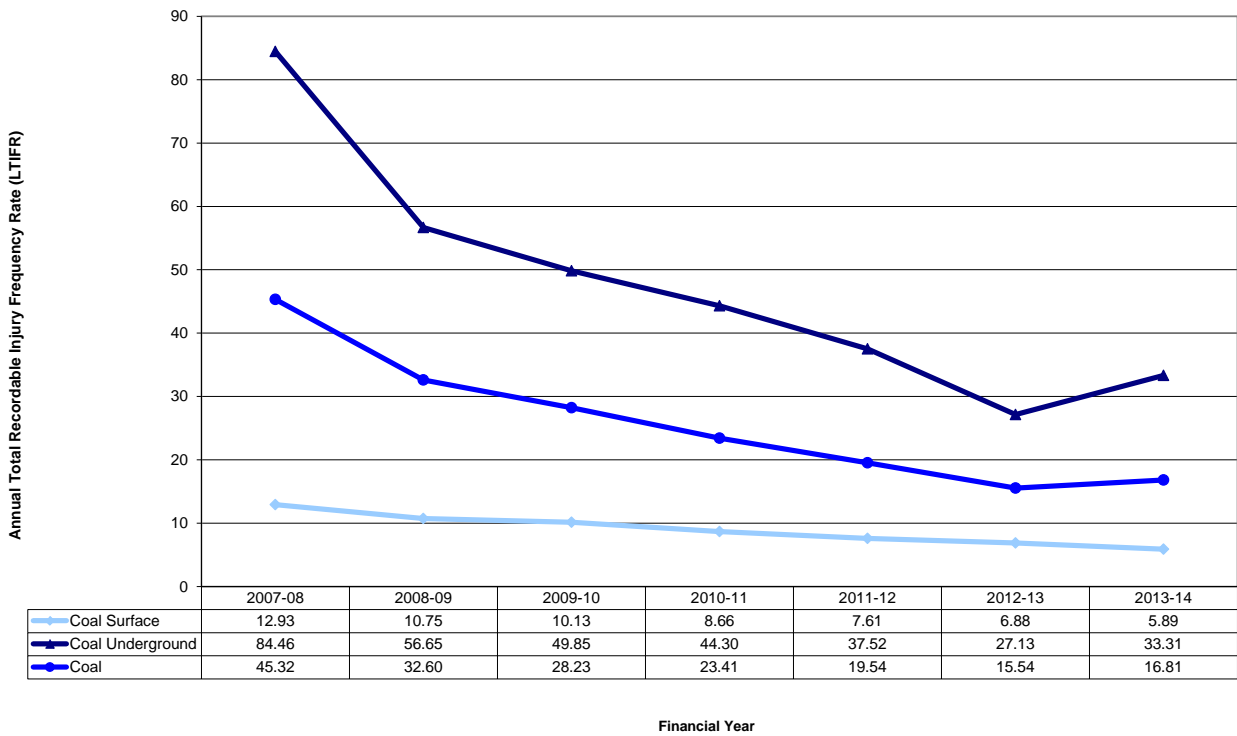
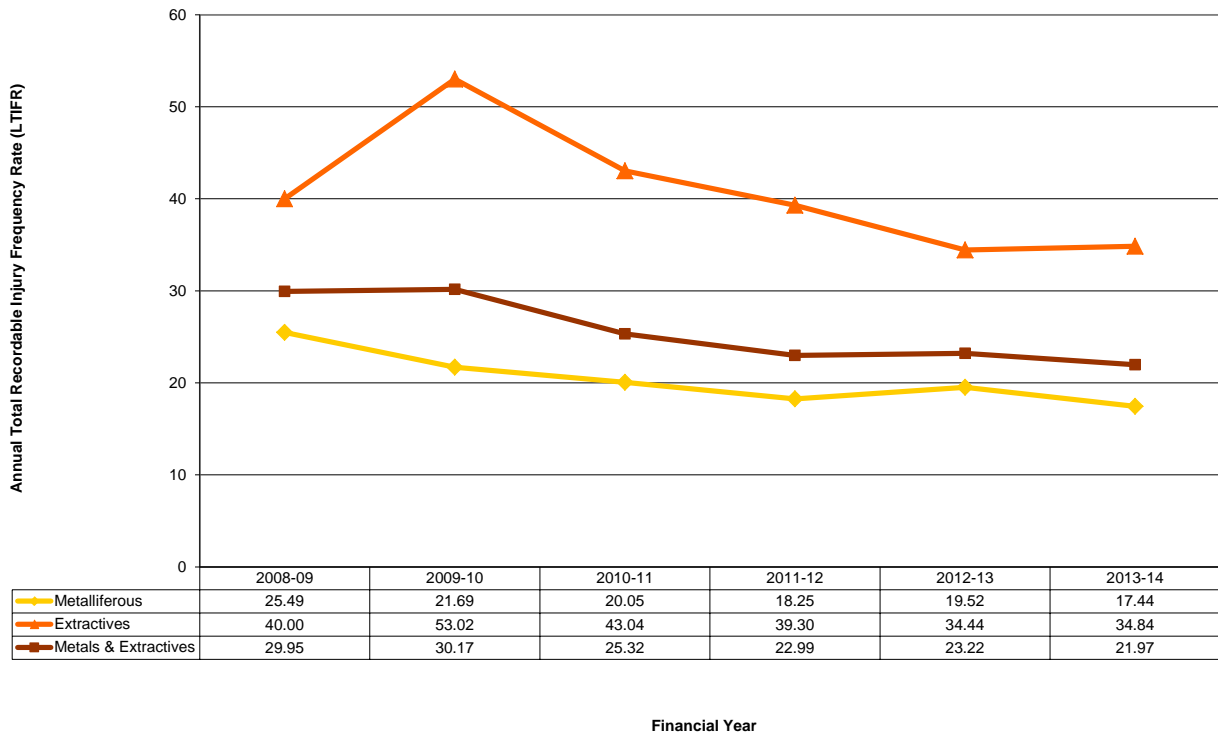


Figure 22
Metalliferous & Extractives annual total recordable injury frequency rate (TRIFR) 2007-08 to 2013-14



5. Serious bodily injuries (SBIs)

This section provides a breakdown of injuries that were required to be notified to NSW Trade & Investment under the relevant coal and non-coal legislation because of the nature of injury and under the relevant Petroleum (Onshore) legislation where the injury required immediate attention by a medical practitioner.

The classification of serious bodily injuries (SBIs) remains consistent under the CMHSR 2006 and MHSR 2006, although it omits dislocations and is slightly more inclusive for certain fractures and amputations.

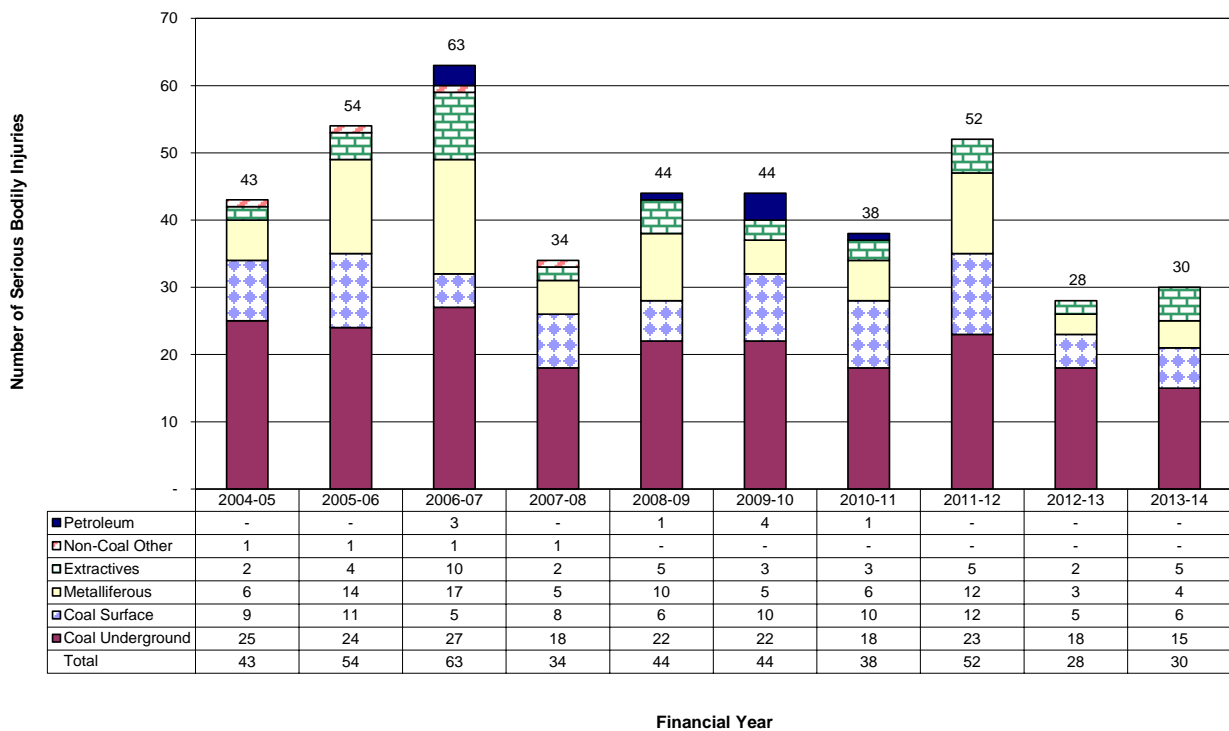
Note that Petroleum (Onshore) serious bodily injuries are notified at a lower threshold than for the rest of the industry

Note also that the measure of serious bodily injuries is not directly comparable to other mining jurisdictions or the WorkCover Authority of NSW, which use varying definitions for disability injuries.

Refer to [Appendix 4](#) for details of serious bodily injury types and relevant legislation

5.1. Serious bodily injuries by Sector

Figure 23
Coal, Metalliferous & Extractives serious bodily injuries 2004-05 to 2013-14



5.2. Annual serious bodily injury frequency rate (SBIFR)

Figure 24
Coal, Metalliferous & Extractives annual serious bodily injury frequency rate (SBIFR) 2004-05 to 2013-14

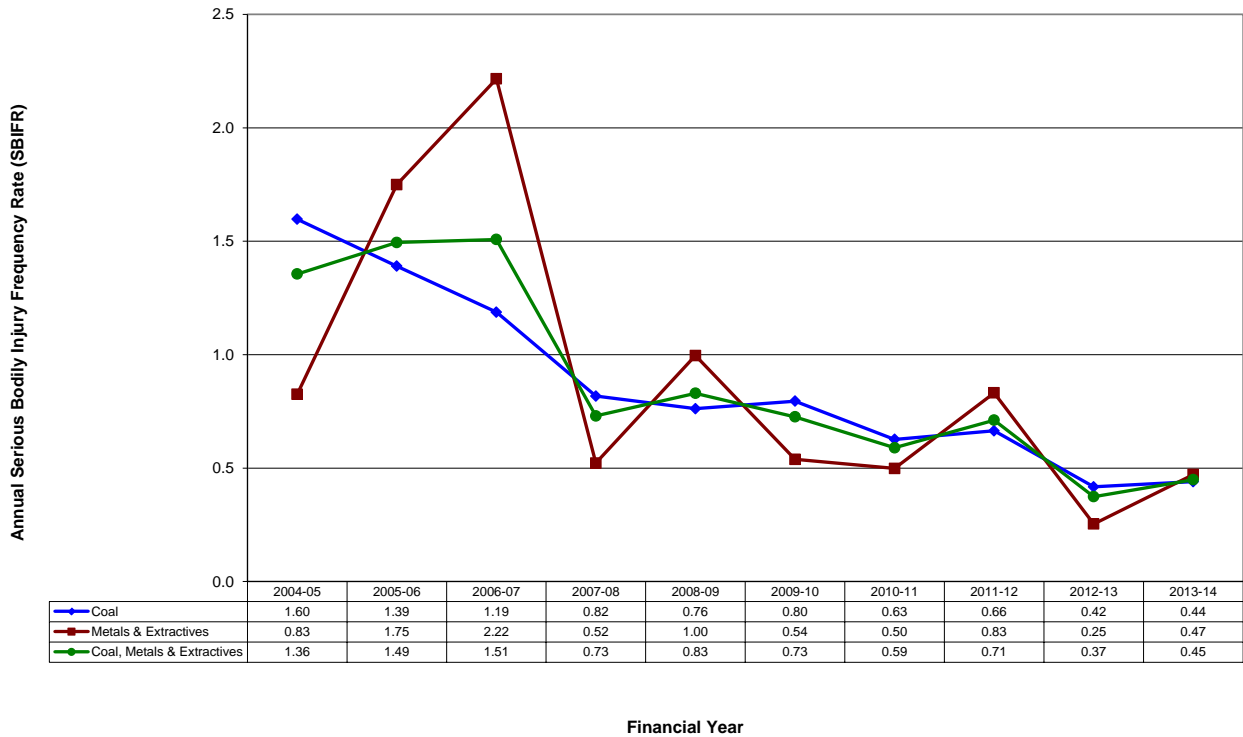


Figure 25
Coal annual serious bodily injury frequency rate (SBIFR) 2004-05 to 2013-14

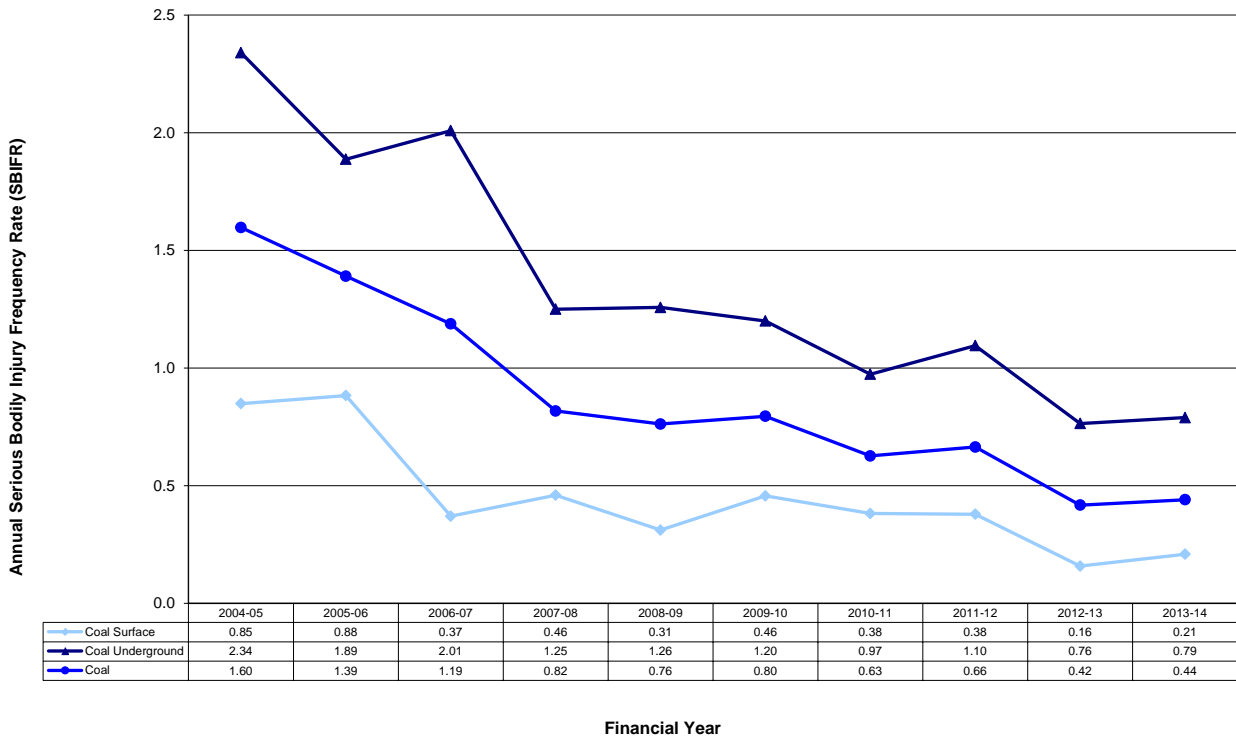
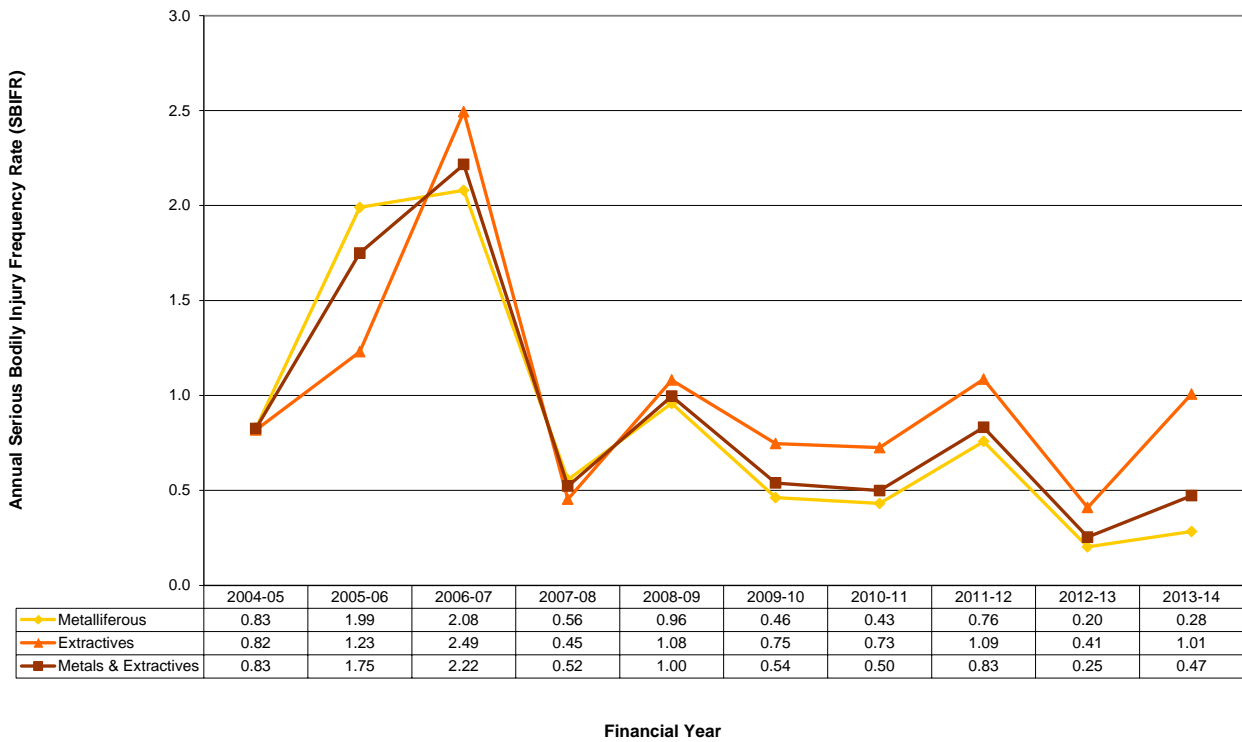


Figure 26
Metalliferous and Extractives annual serious bodily injury frequency rate (SBIFR) 2004-05 to 2013-14



5.3. Five year average serious bodily injury frequency rate (SBIFR)

Figure 27
Coal, Metalliferous & Extractives Mining 5 year average serious bodily injury frequency rate (SBIFR) 2004-05 to 2013-14

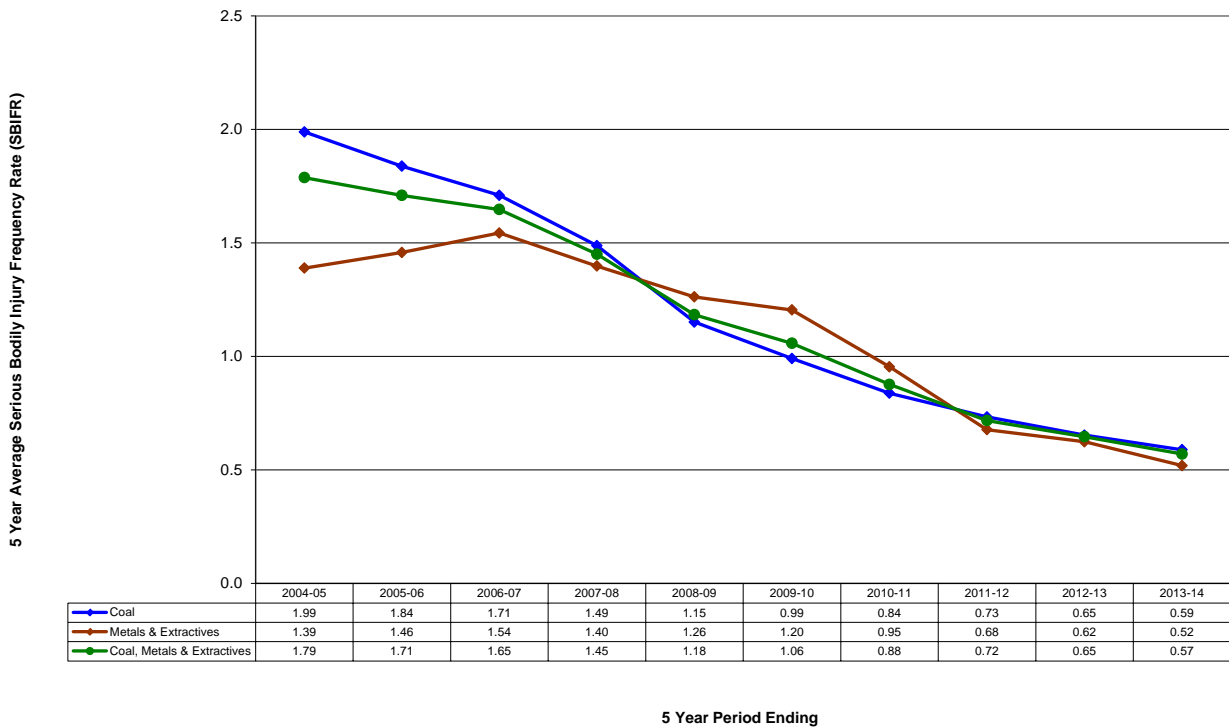


Figure 28
Coal 5 year average serious bodily injury frequency rate (SBIFR) 2004-05 to 2013-14

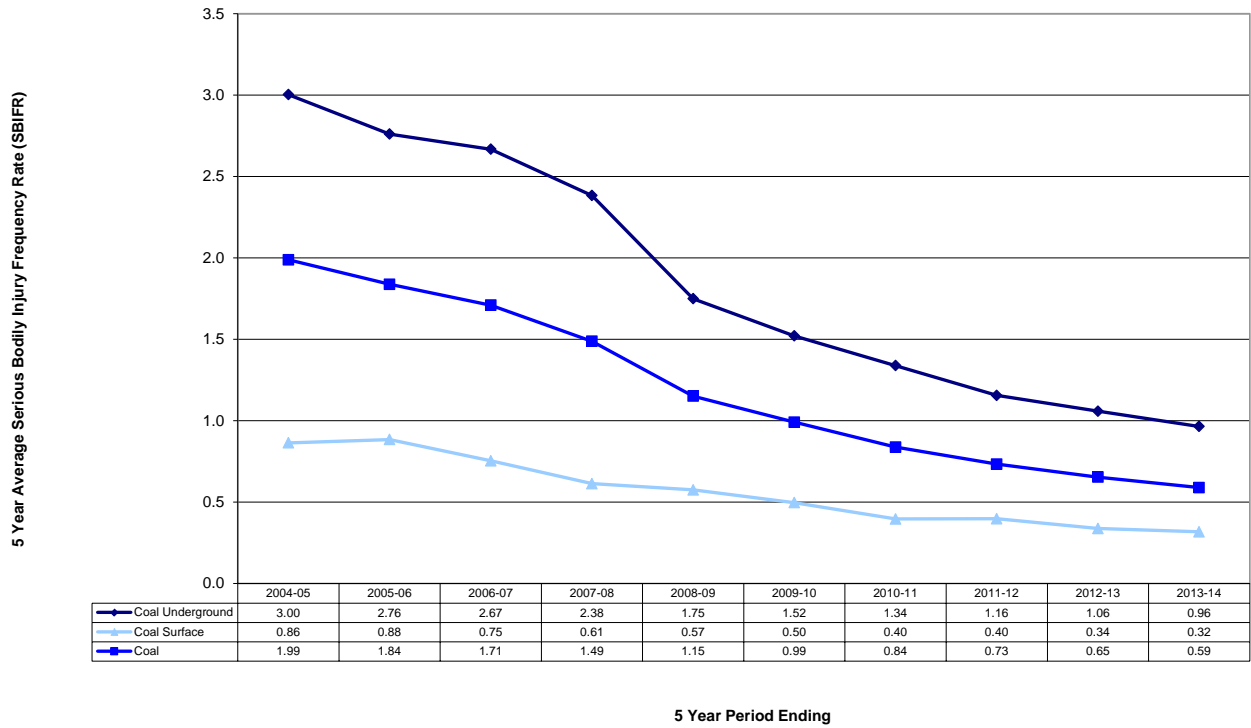


Figure 29
Metalliferous and Extractives 5 year average serious bodily injury frequency rate (SBIFR) 2004-05 to 2013-14



6. Notifiable injury outcomes

This section provides a breakdown of injuries with outcomes that were required to be notified to NSW Trade & Investment.

An injury may result in one or more of the following notifiable injury outcomes:

- fatality
- entrapment
- loss of consciousness
- hospital inpatient admission
- at least seven days of lost time and/or alternative duties

These injury outcomes (except fatality) became reportable from mid-2006-07 for Coal under CMHSR 2006 Clauses 55, 56 and 57, and from the second quarter of 2008-09 for Non-Coal, under MHSR 2007 Clause 145 and 146.

Refer to [Appendix 5](#) for details of notifiable injury outcomes and relevant legislation

6.1. Notifiable injury outcomes by injury outcome

Figure 30
Coal and Non-coal (excl Petroleum) notifiable injury outcomes 2006-07 to 2013-14

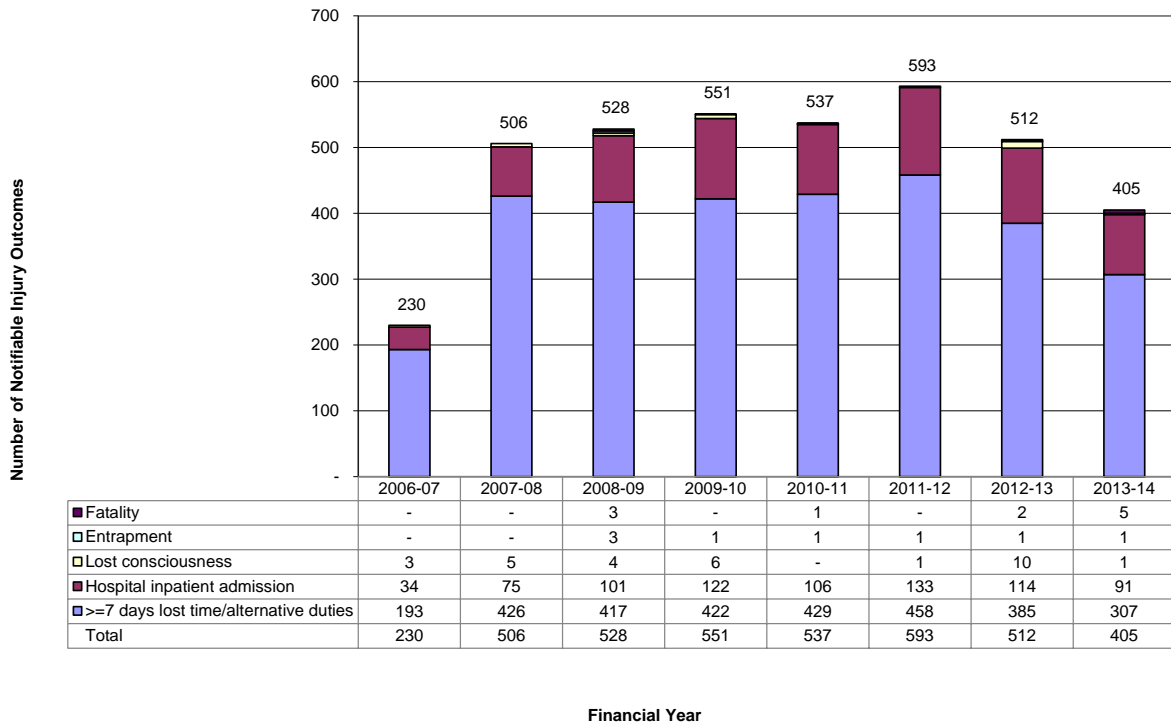


Figure 31
Coal notifiable injury outcomes 2nd quarter 2006-07 to 2013-14

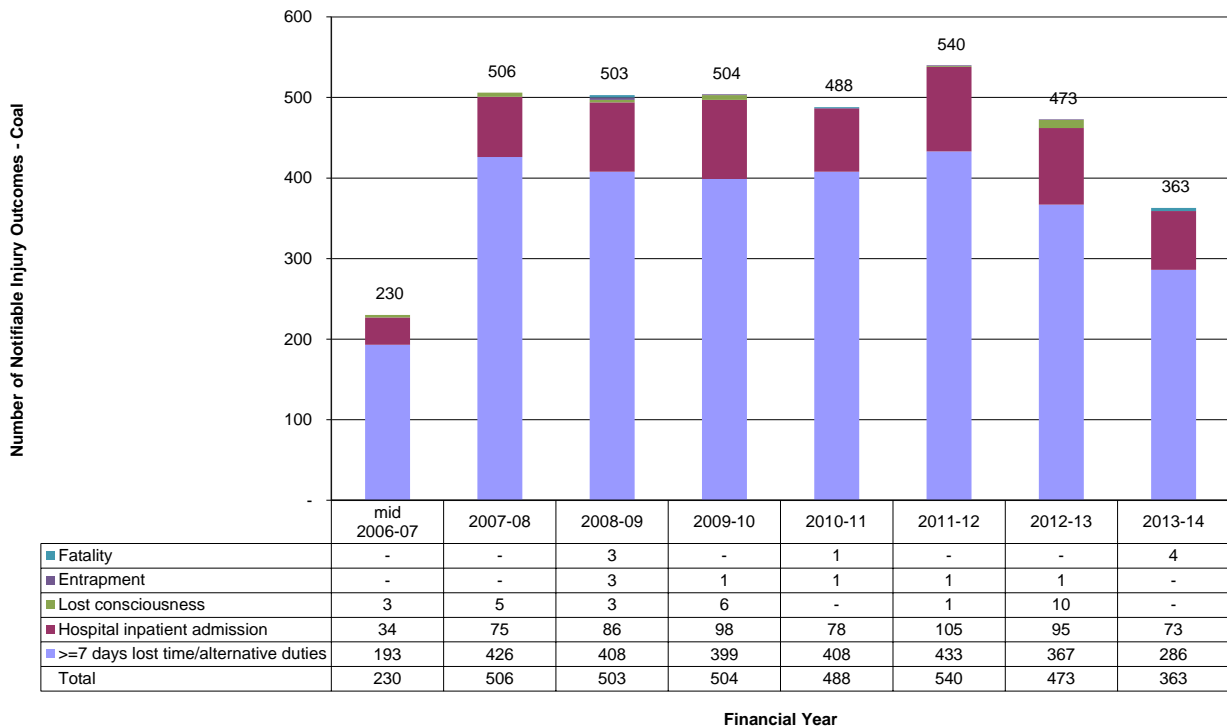


Figure 32
Metalliferous notifiable injury outcomes 2nd quarter 2006-07 to 2013-14

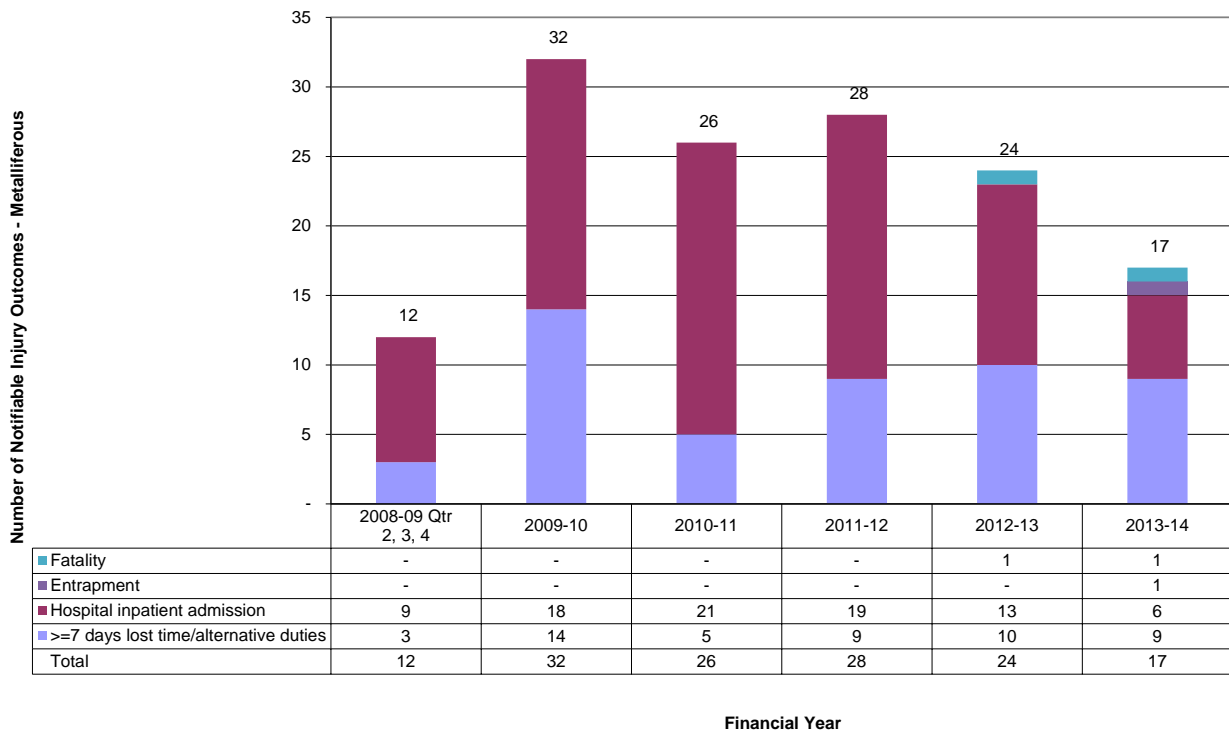
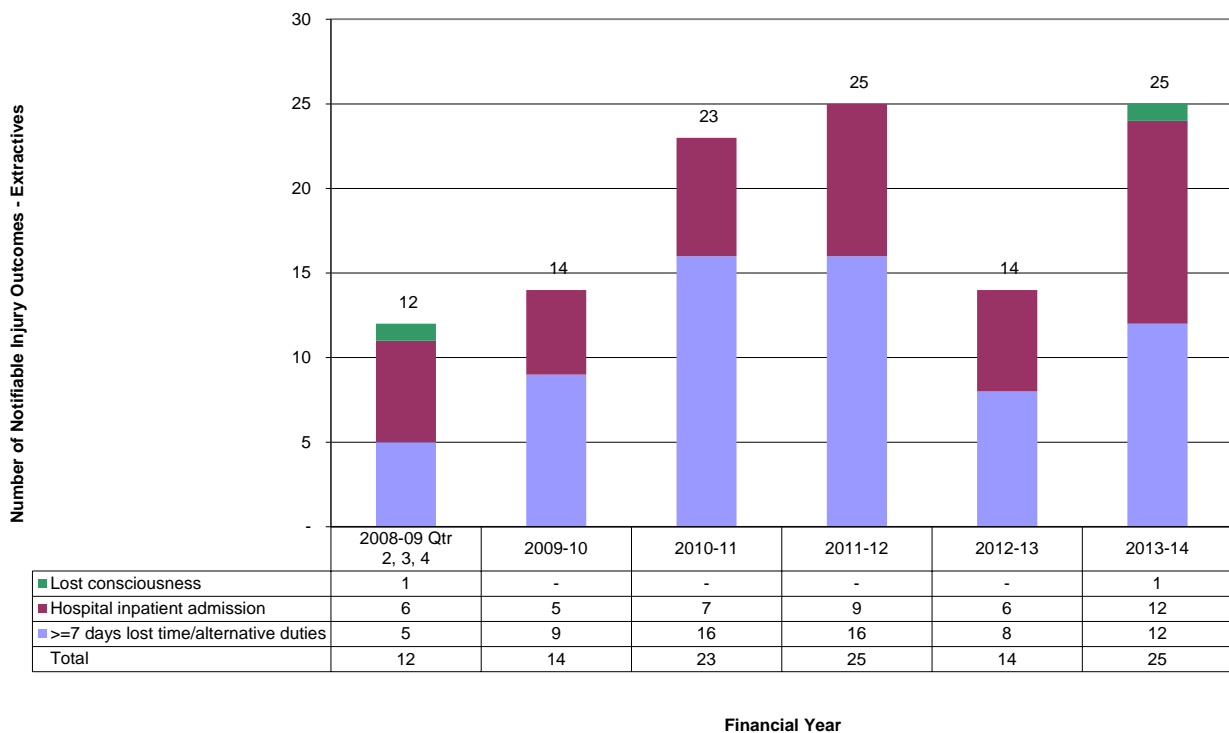


Figure 33
Extractives notifiable injury outcomes 2nd quarter 2006-07 to 2013-14



7. Incidents

This section reports on the breakdown of incidents notified to NSW Trade & Investment in the Coal, Metalliferous, Extractives, Non-Coal Other and Petroleum (Onshore) mining sectors, including Complaints and Incident not elsewhere classified (NEC).

The commencement of CMHSR 2006 in mid 2006-07 and MHSR 2007 in the second quarter of 2008-09 resulted in an increase in incident notifications due to some new and more inclusive reporting requirements..

7.1. All incidents

Figure 34
All incidents by sector 2004-05 to 2013-14

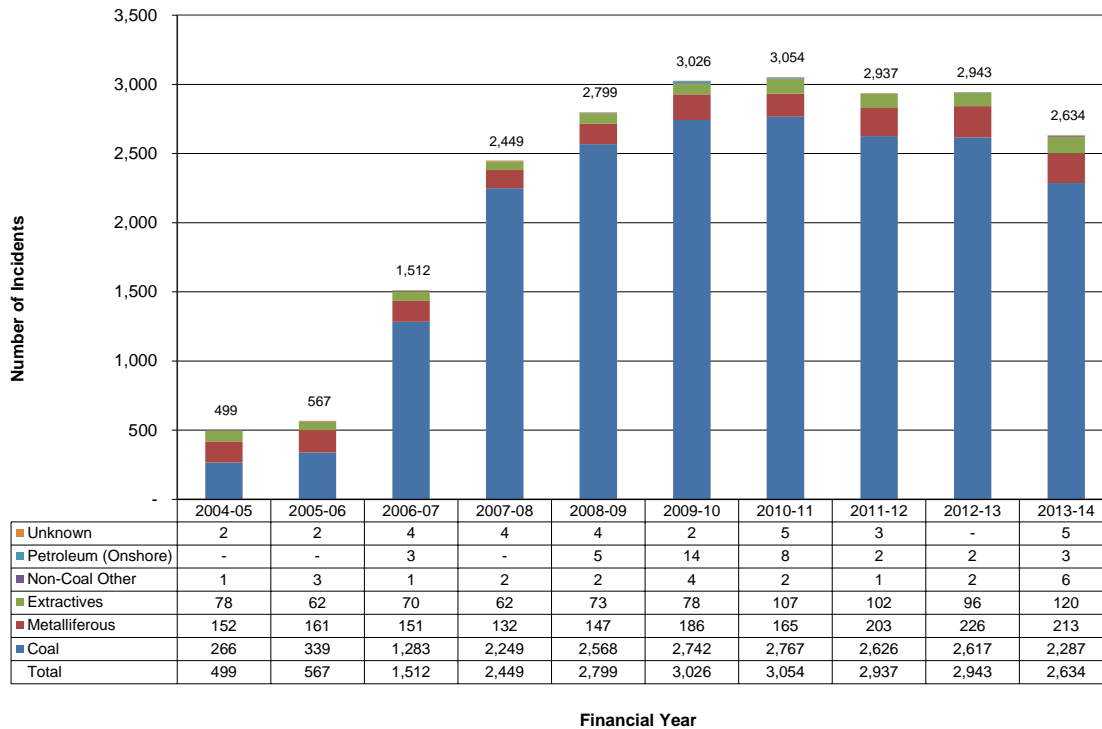


Figure 35
All incidents by event subtype 2004-05 to 2013-14

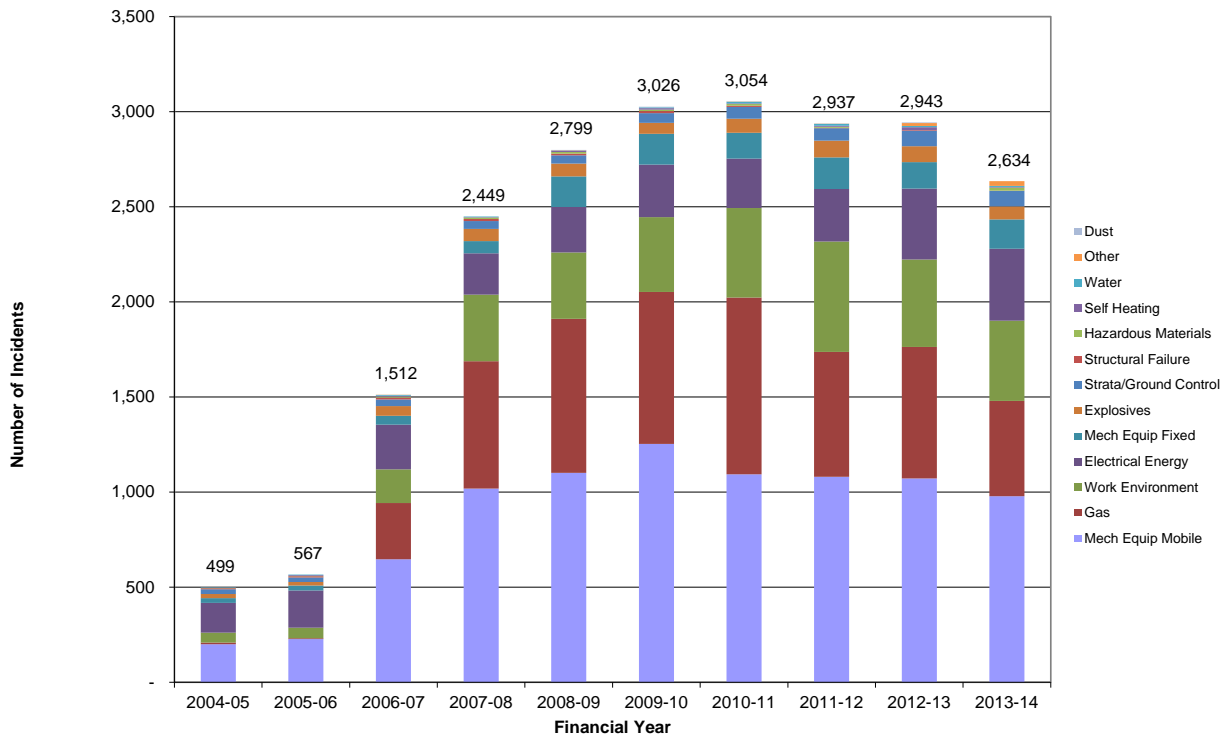
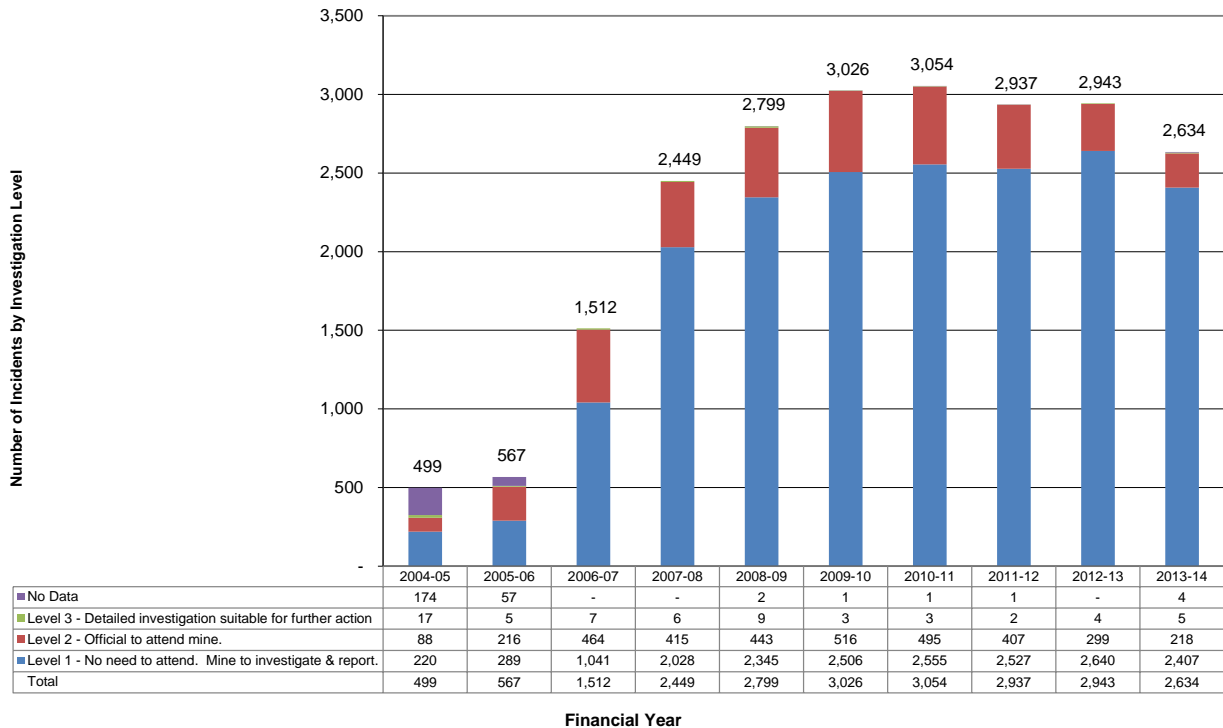


Figure 36
All incidents by investigation level 2004-05 to 2013-14



7.2. Coal incidents

Figure 37
Coal incidents by event subtype 2004-05 to 2013-14

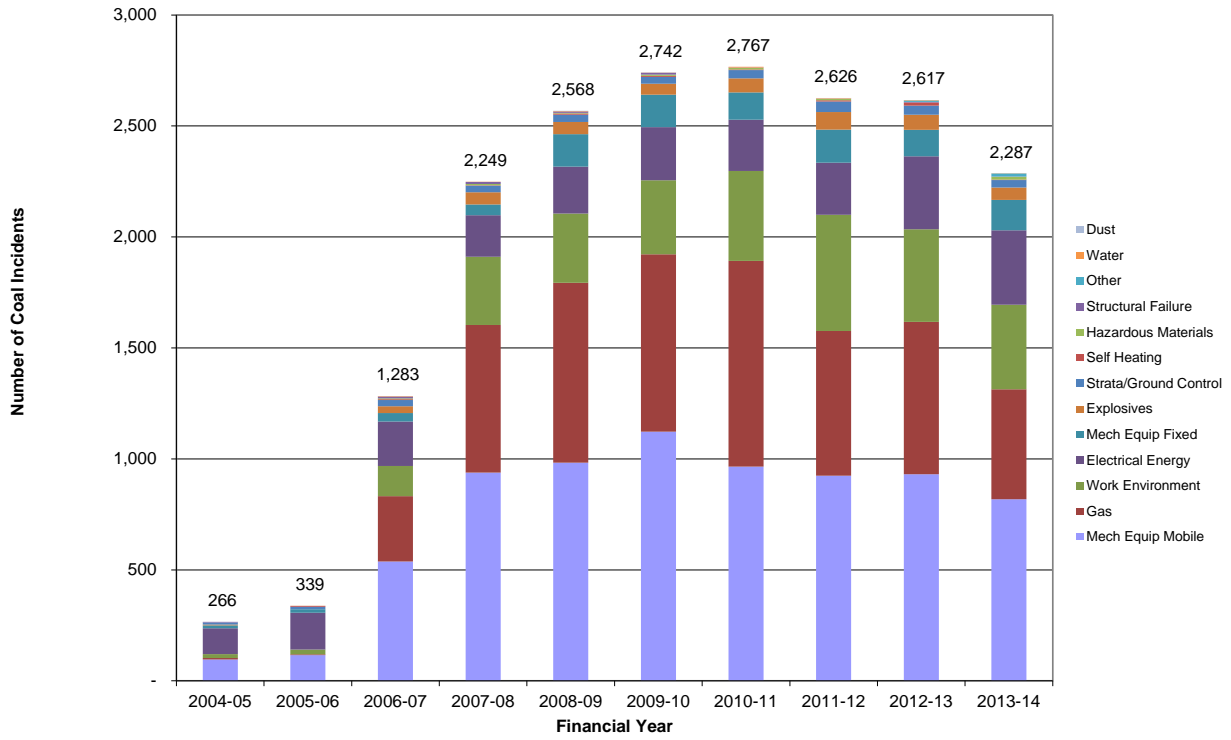
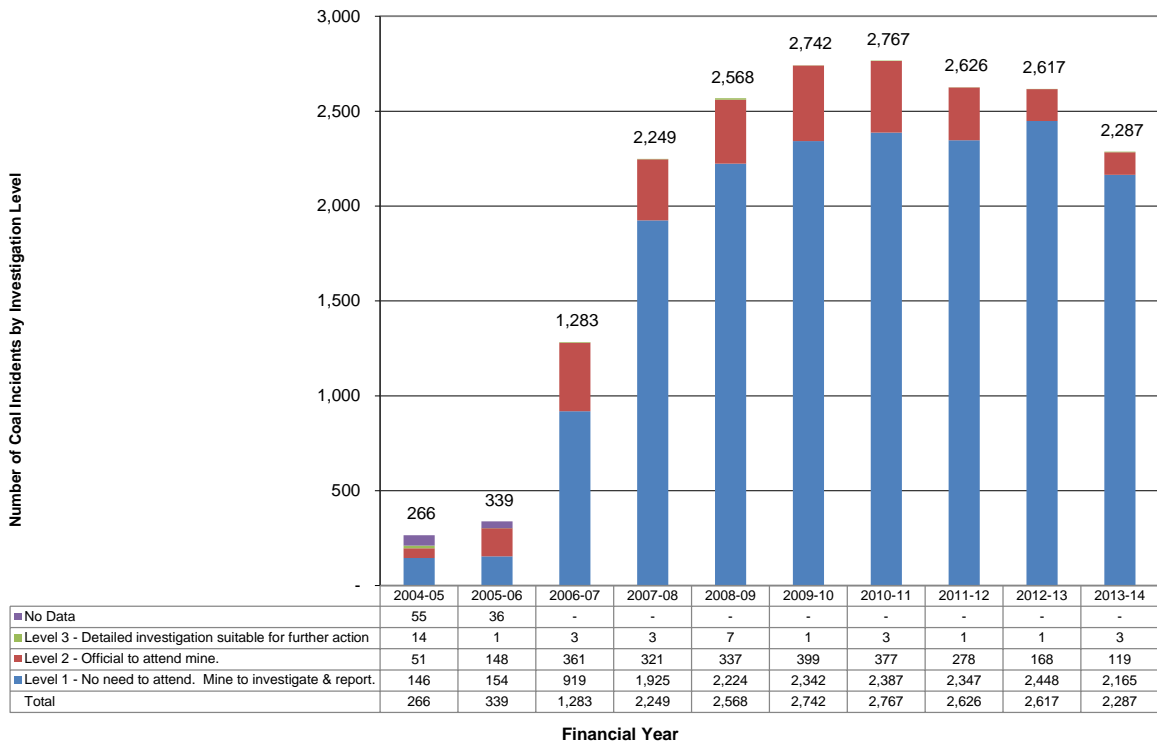


Figure 38
Coal incidents by investigation level 2004-05 to 2013-14



7.3. Metalliferous incidents

Figure 39
Metalliferous incidents by event subtype 2004-05 to 2013-14

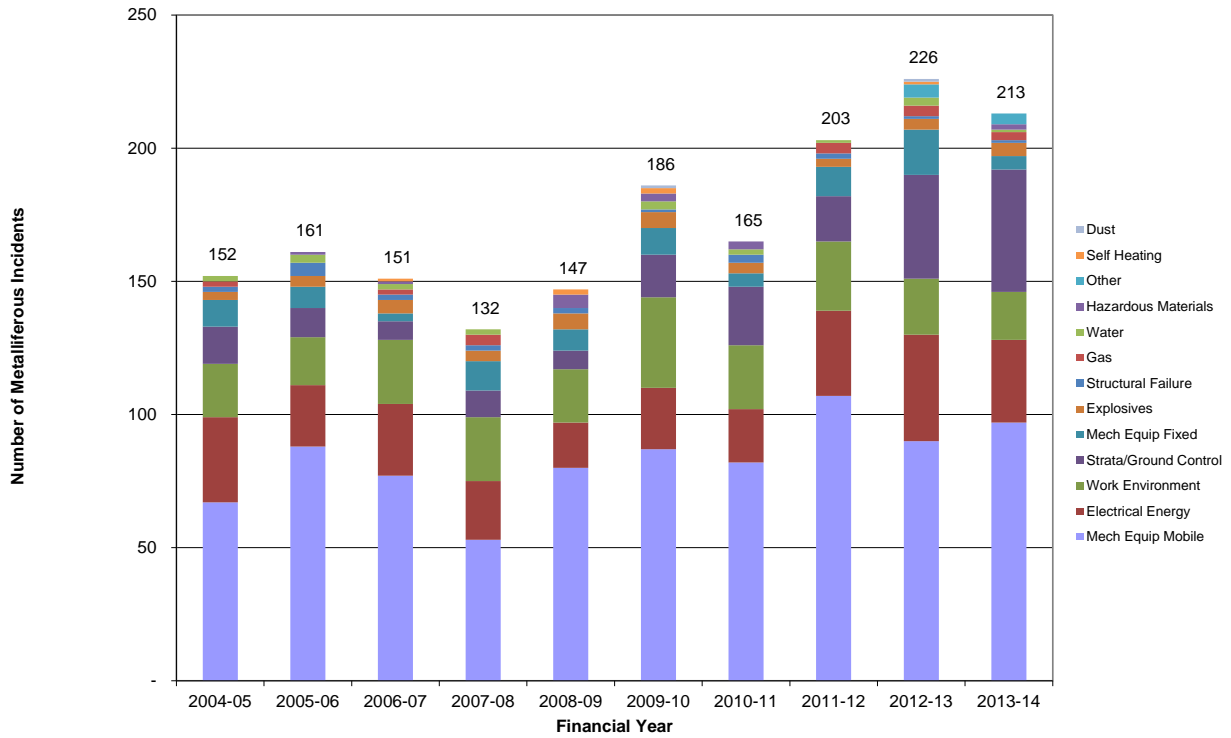
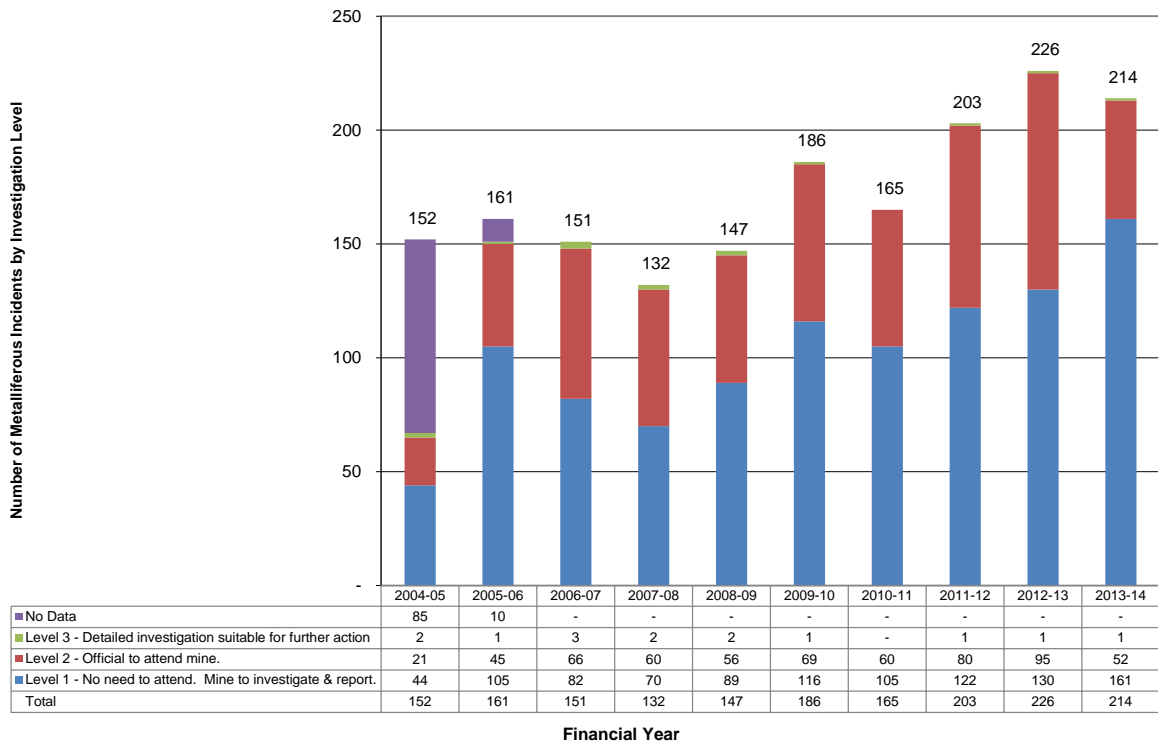


Figure 40
Metalliferous incidents by investigation level 2004-05 to 2013-14



7.4. Extractives incidents

Figure 41
Extractives incidents by event subtype 2004-05 to 2013-14

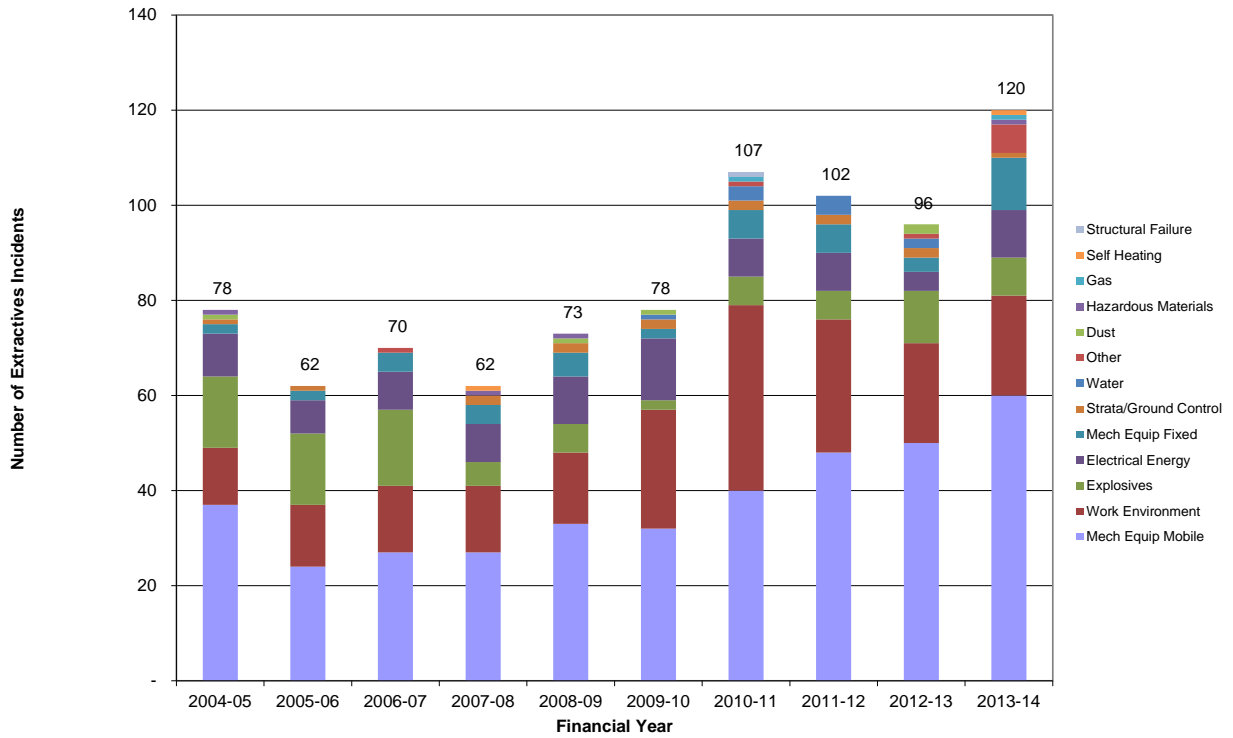
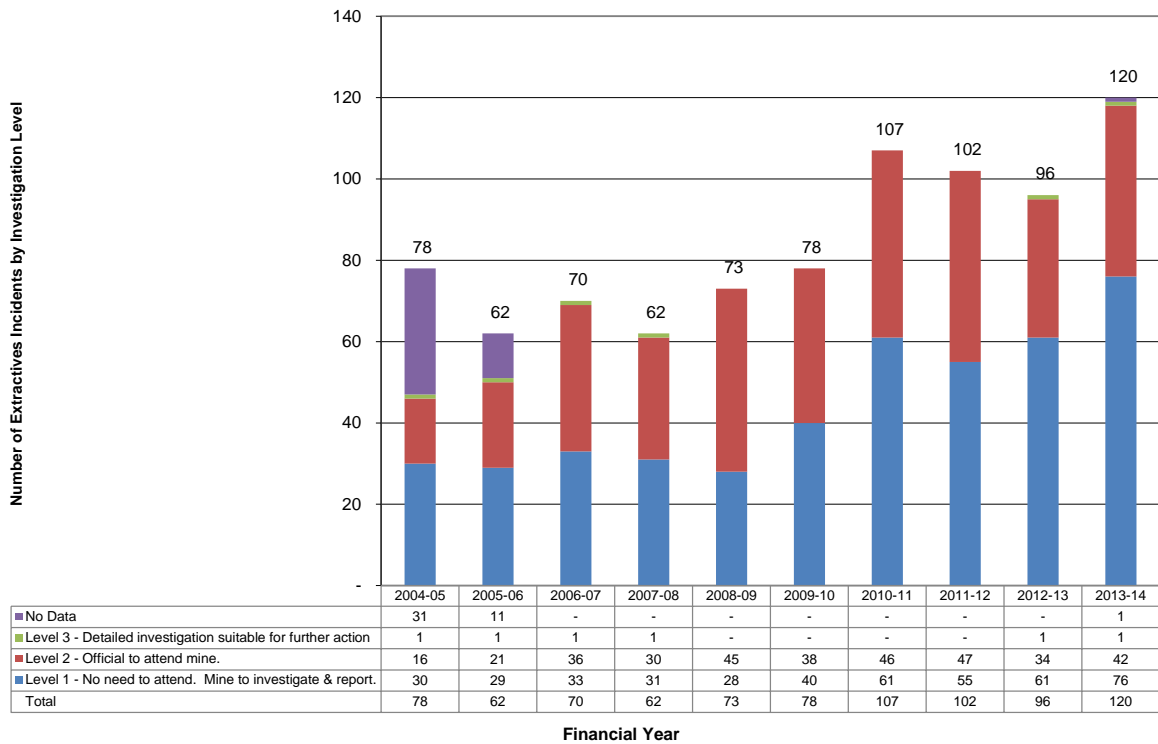


Figure 42
Extractives incidents by investigation level 2004-05 to 2013-14



Refer to [Appendix 2](#) for details of Incident Event Subtypes.

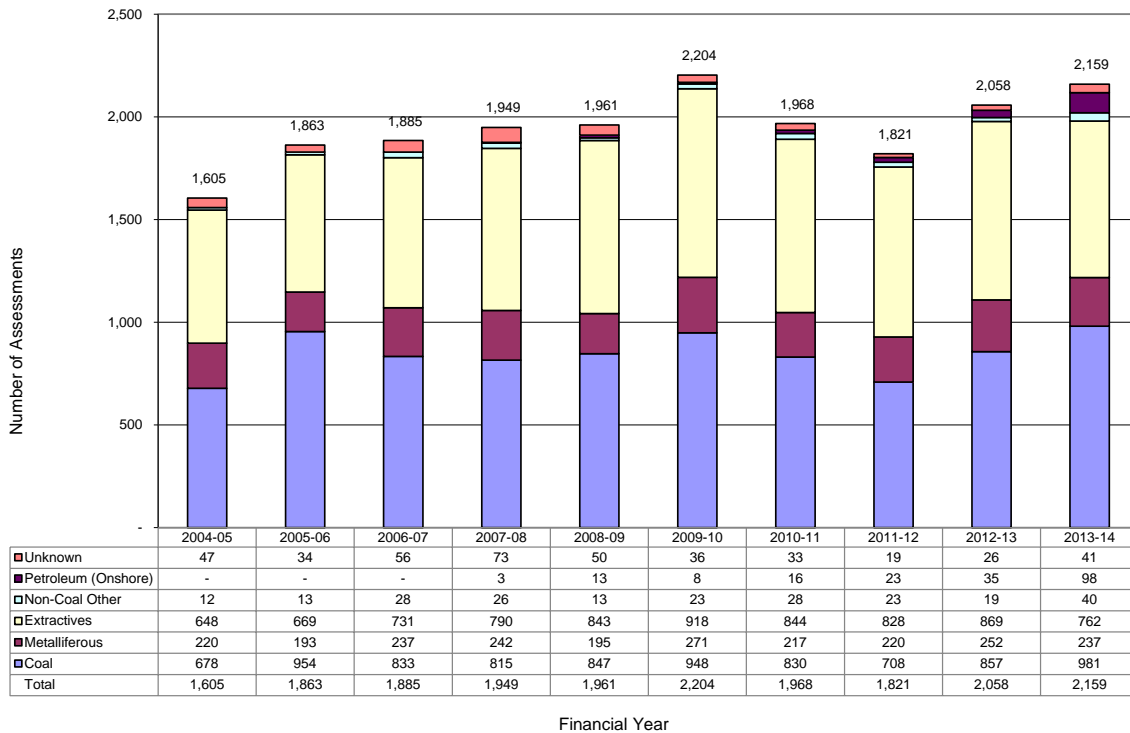
8. Assessments

This section reports on formal and informal mining, electrical and mechanical inspections, audits, assessments and reviews conducted by NSW Trade & Investment Inspectors and Mine Safety Officers.

Refer to the Definitions, COMET Database Terms and Appendix B for details of the classifications used.

8.1. All assessments by sector

Figure 43
All assessments by sector 2004-05 to 2013-14



8.2. Assessments by event subtype

Figure 44
All assessments by event subtype 2004-05 to 2013-14

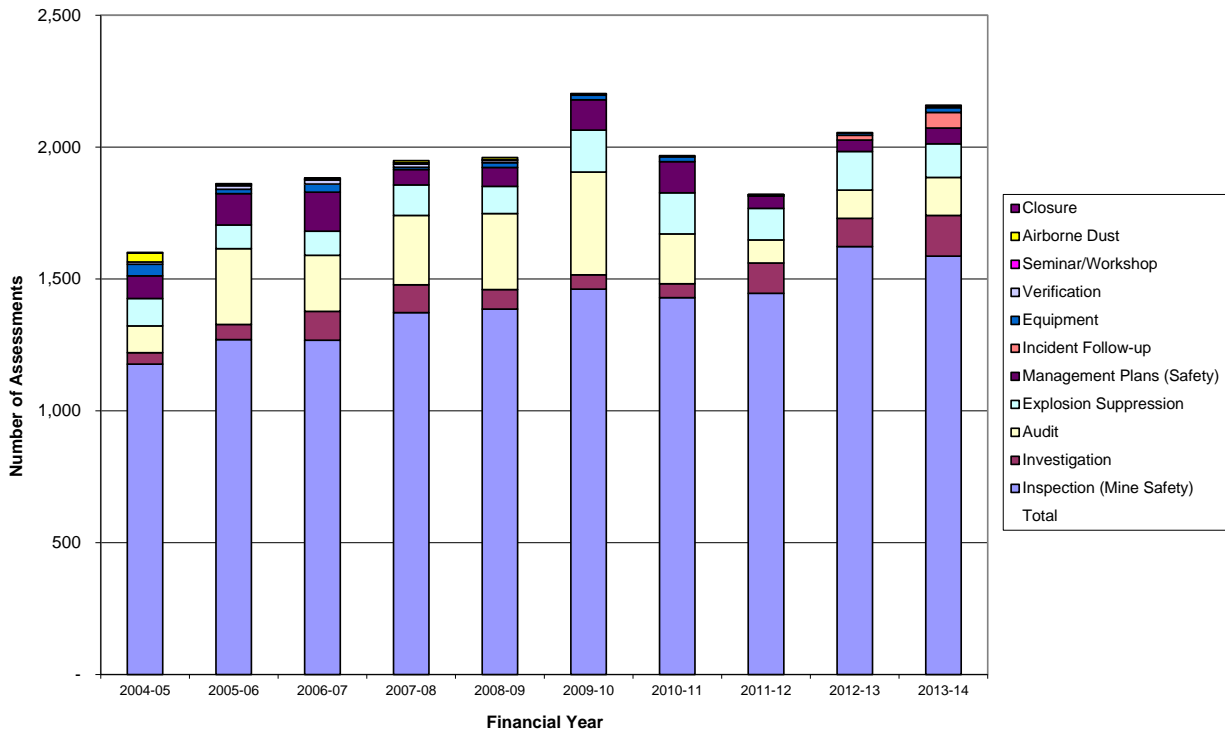


Figure 45
Coal assessments by event subtype 2004-05 to 2013-14

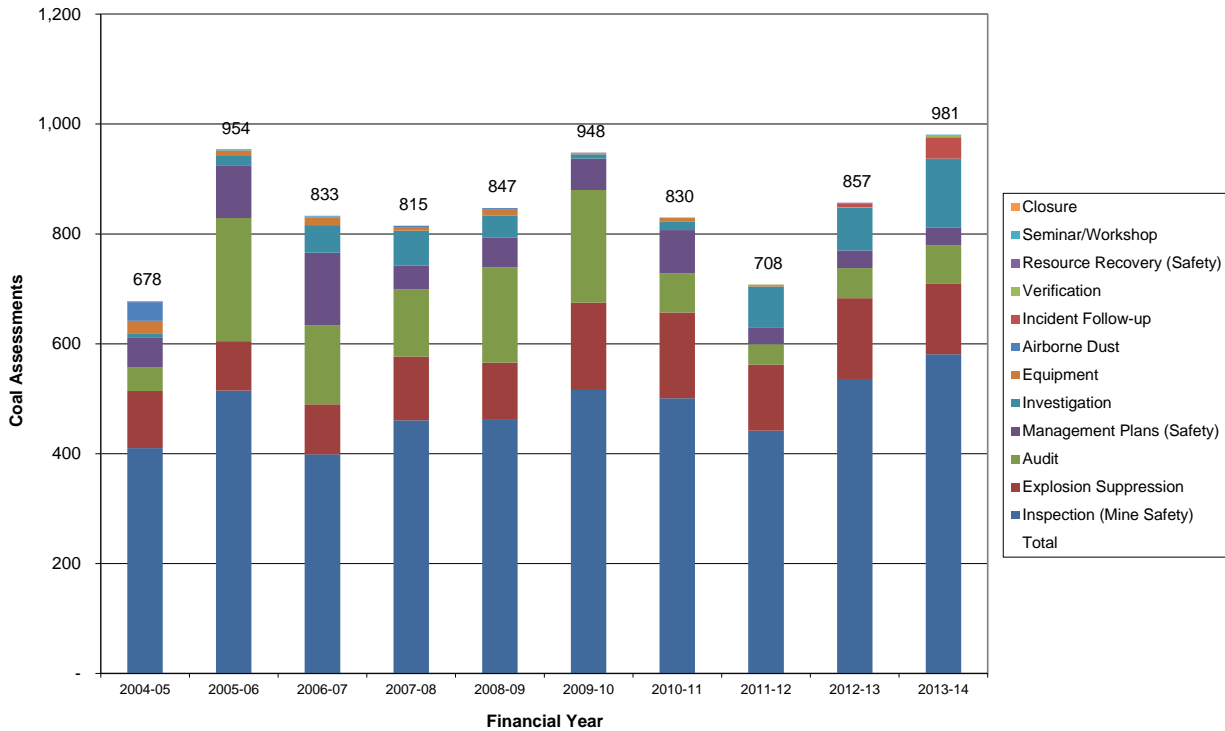


Figure 46
Metalliferous assessments by event subtype 2004-05 to 2013-14

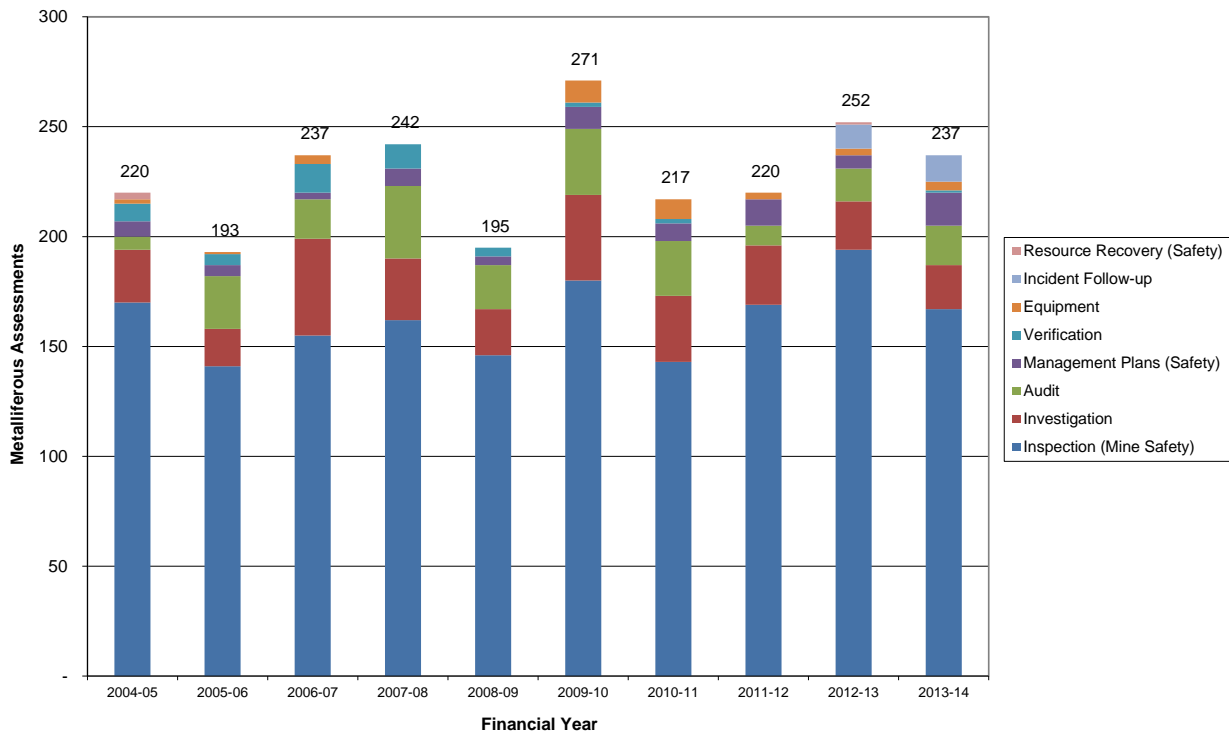
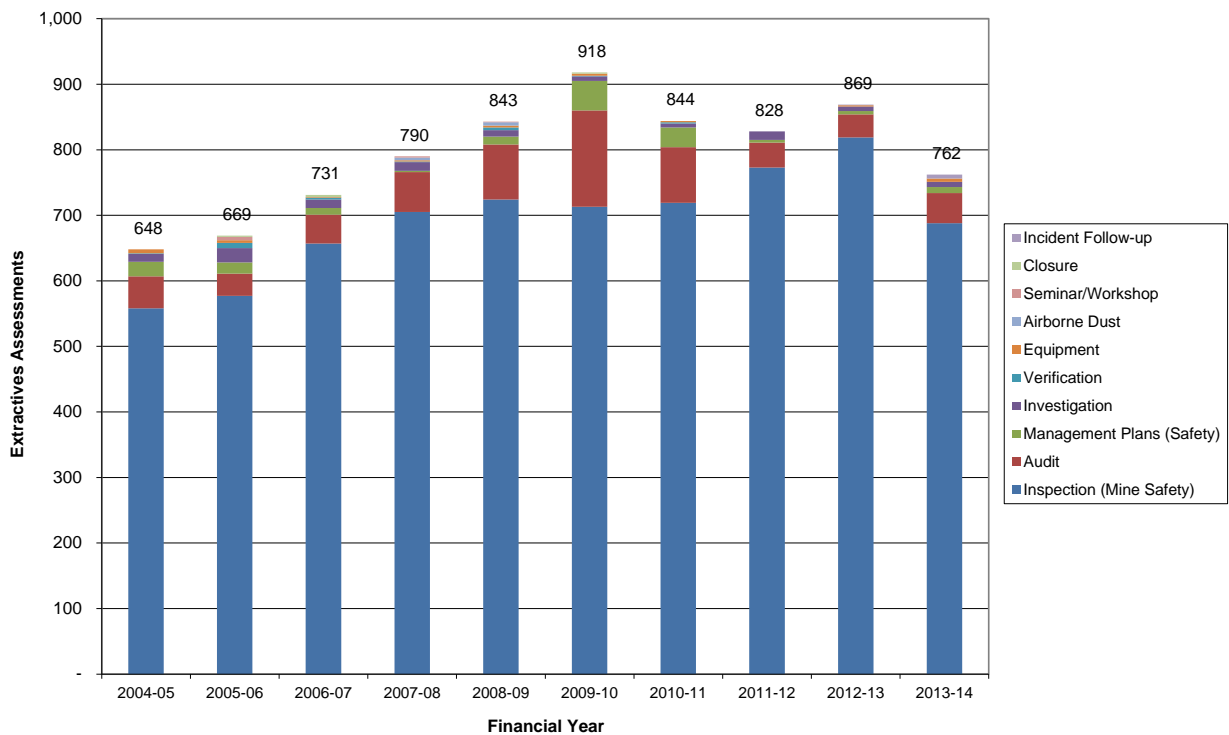


Figure 47
Extractives assessments by event subtype 2004-05 to 2013-14



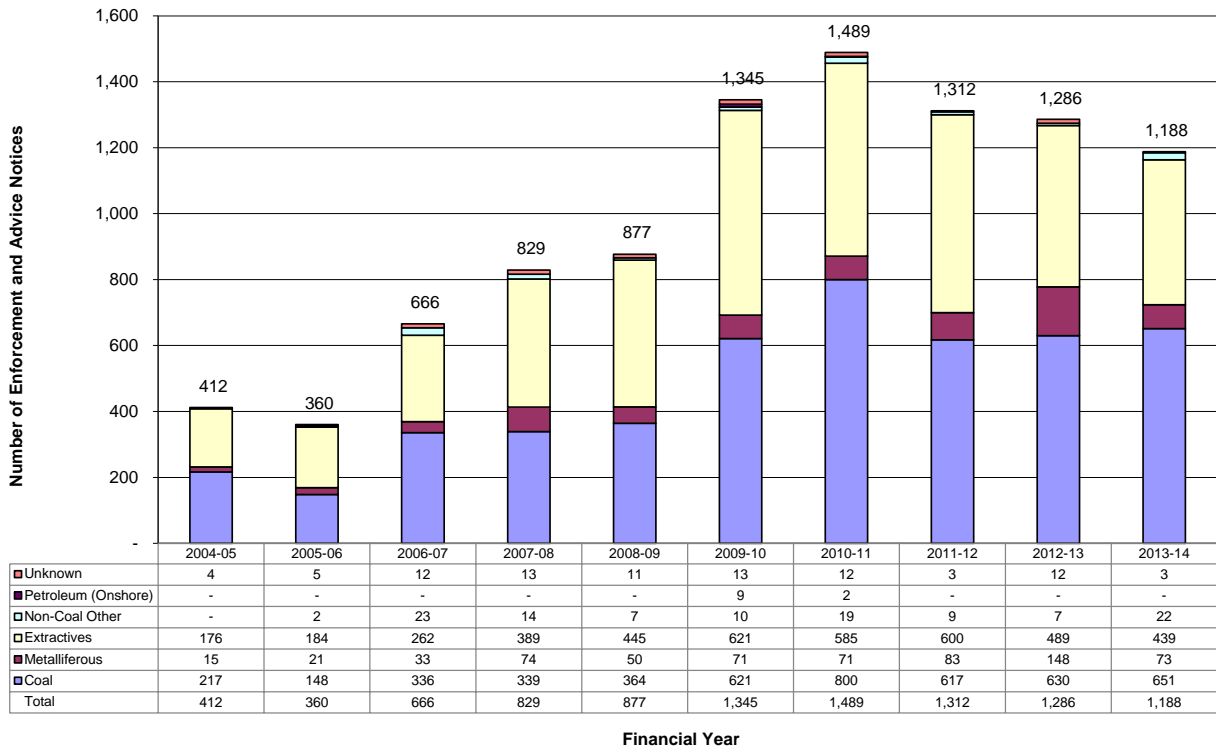
9. Enforcement and advice/improvement notices

This section reports on advice/improvement, prohibition, investigation and explosives enforcement and advice Notices issued by NSW Trade & Investment Inspectors and Mine Safety Officers.

The commencement of the current coal legislation (CMHSA 2002 and CMHSR 2006) in mid-2006-07 and the current non-coal legislation (MHSA 2004 and MHSR 2007) in the second quarter of 2008-09, together with the requirement that all advice to mines must now be in writing, has resulted in an increase in enforcement and advice notices issued..

9.1. All enforcement and advice notices by sector

Figure 48
All enforcement and advice/improvement notices by sector 2004-05 to 2013-14



9.2. Enforcement and advice notices by notice category

Figure 49
All enforcement and advice/improvement notices by notice category 2004-05 to 2013-14

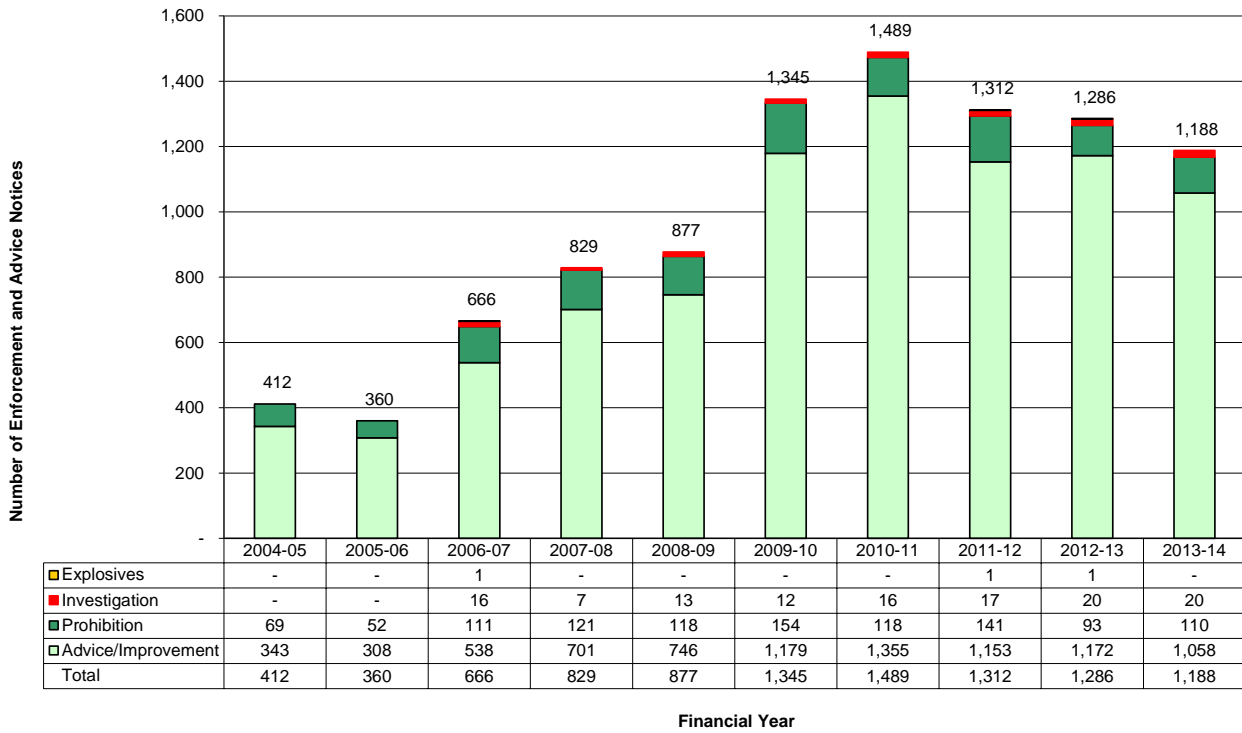


Figure 50
Coal enforcement and advice/improvement notices by notice category 2004-05 to 2013-14

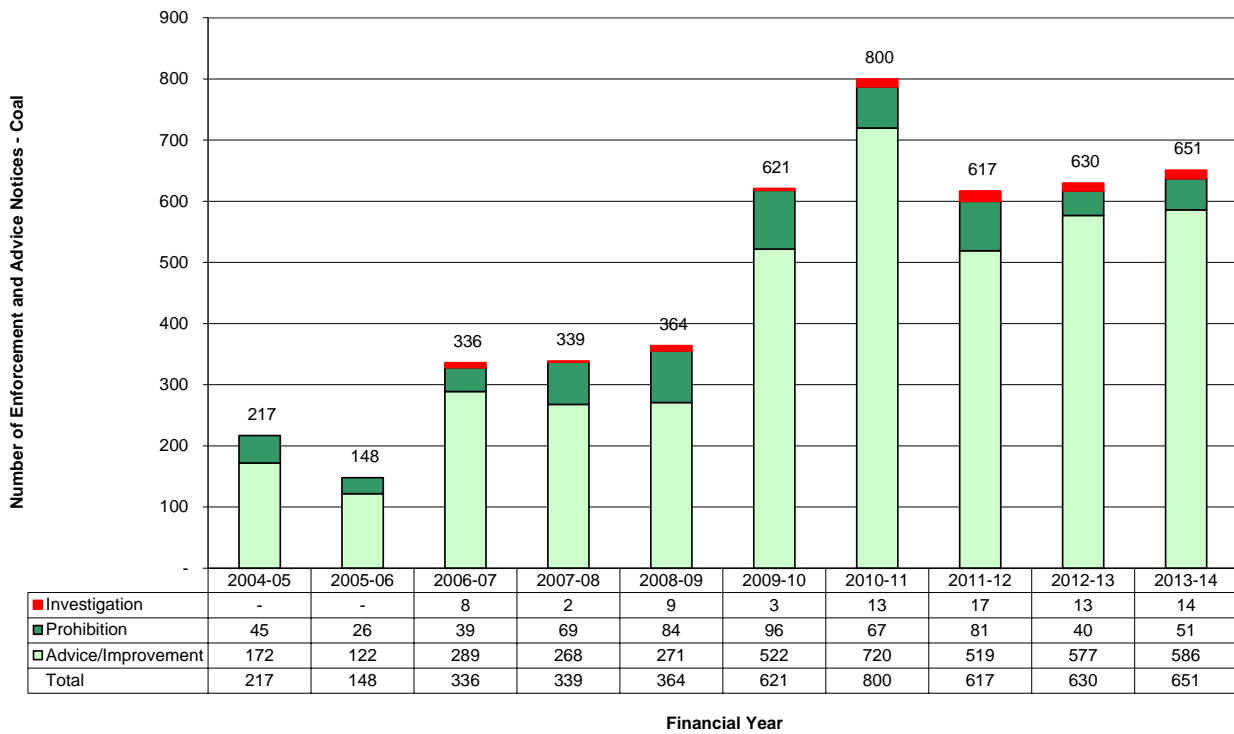


Figure 51
Metalliferous enforcement and advice/improvement notices by notice category 2004-05 to 2013-14

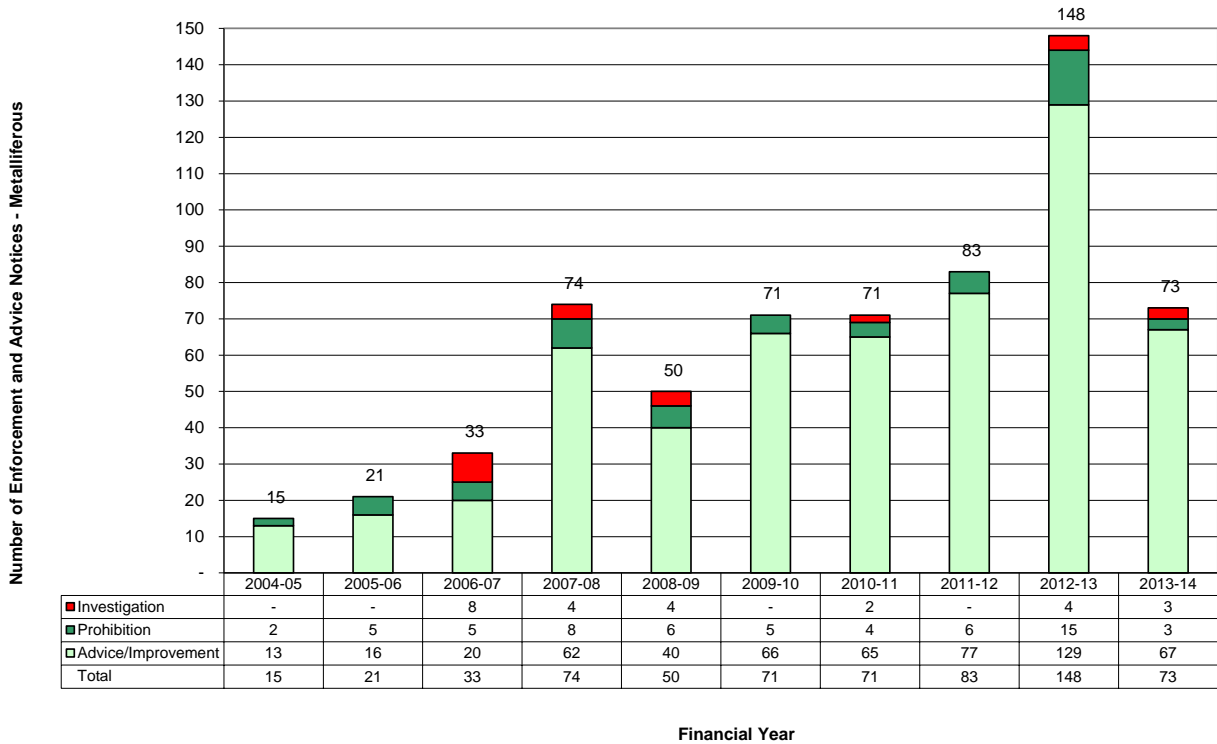
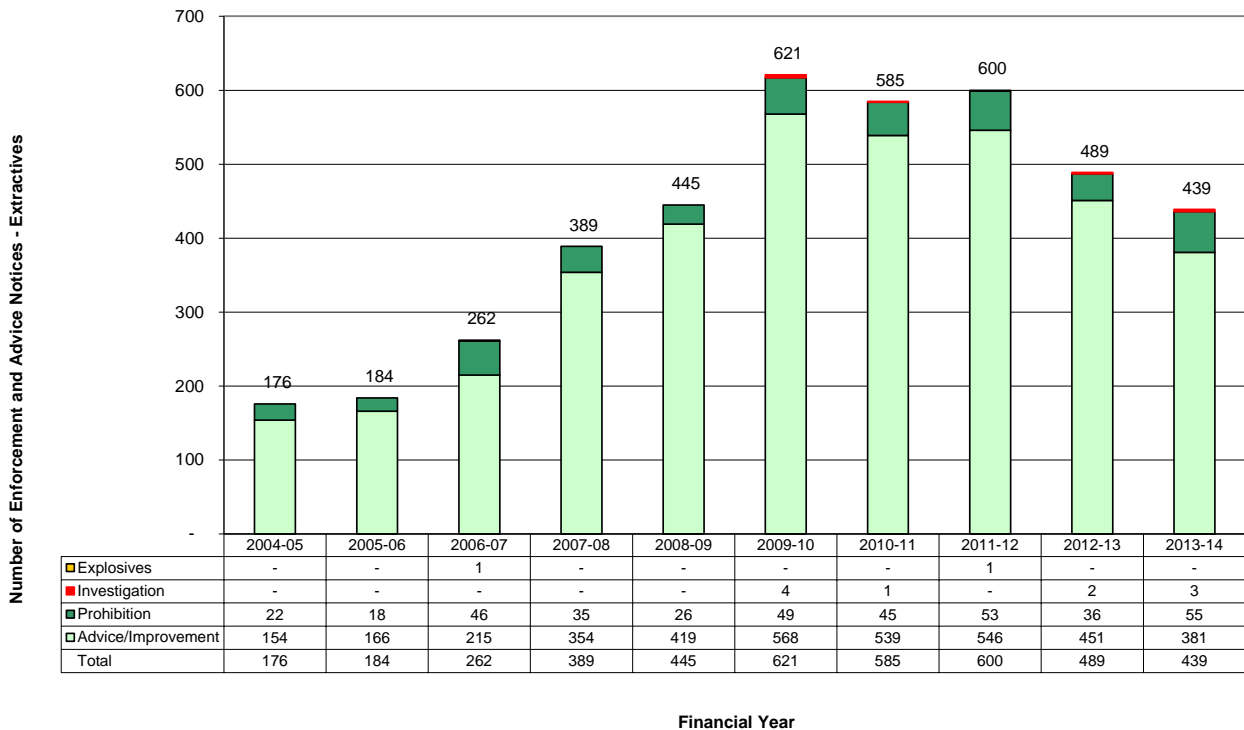


Figure 52
Extractives enforcement & advice/improvement notices by category 2004-05 to 2013-14



Appendices – Additional information

Appendix 1 Mine types and mine operation types

Figure 53
Mine types

Mining Sector		Mine Type
Coal		Coal Declared Plant – CPP
Non Coal	Metalliferous	Metals Mineral Sands
	Extractives	Construction Materials Industrial Minerals
	Other	Gemstones or Precious Stones Opal Claim Readymix/Bitumen Ancillary to Mining Waste Mining Treatment Plant To Be Determined
Petroleum (Onshore)		Petroleum

Figure 54
Mine operation types

Operation	Operation Type
Underground	Underground
Surface	Open Cut Processing Borrow Pit Dredging Drilling Exploration Exploration Wells Opal Mining (All Types) Production Wells To Be Determined

Note that in this report, both surface and underground activity occurring at an underground operation, is considered as underground activity

Appendix 2 COMET incident event subtypes

Figure 55
COMET incident event subtypes

Incident Event Subtype	Description
Dust	dust ignition; sulphide dust explosion; silica exposure
Electrical energy	electrical energy (electric shock); burns caused by electrical heat; outbreak of fire due to electricity; unplanned movement due to electricity
Explosives	explosives general (ejection of flyrock); fault with an explosive; misfire – significant
Gas	gas ignition; asphyxiate gases such as CO ₂ ; poisonous gases such as H ₂ S or CO; explosive gases such as H ₂ ; flammable gases.
Hazardous materials	scolding, injection of hydraulic fluid, flammable / explosive liquids, liquid chemicals, etc
Mechanical equipment fixed	winding systems, crushers, screens, conveyors, guarding, etc.
Mechanical equipment mobile	mobile plant
Self heating	spontaneous combustion involving increase in temperature of coal or other combustible material from the oxidation process
Strata control	fall of roof or sides, slope stability – High wall, Windblast
Structural failure	Infrastructure failure – bins, buildings, etc
Water	inrush of water
Work Environment	slips, trips and falls; falling or flying objects; fall from a height; ventilation; lightning strike; noise; radiation

Appendix 3 COMET incident types and relevant legislation

Figure 56
COMET incident types under former and current legislation

Mine Category	Legislation	Commenced	Status	Legislation Category	COMET Incident Type	
Coal	Coal Mines Regulation Act 1982	CMRA 1982	26/03/1984	Repealed	*CMRA	*1984 Dangerous Occurrence O/C *1984 Dangerous Occurrence U/G *Serious Bodily Injury CMRA *Fatality
	Coal Mines (General) Regulation 1999	CMGNR1999	1/09/1999	Repealed	*CMGNR	*Notifiable Incidents DCCP CMGNR 1999, CI 83 *Non Spec Acc Ending in Fat/Injury
	Coal Mines (Open Cut) Regulation 1999	CMOCR 1999	1/09/1999	Repealed	*CMOCR	*Notifiable Incidents CMOCR 1999, CI 16
	Coal Mines (Underground) Regulation 1999	CMUGR 1999	1/09/1999	Repealed	*CMUGR	*Dangerous Occurrences CMUGR 1999, CI 34(1) *Notifiable Incidents CMUGR 1999 CI 34A *Other Notifiable Incidents CMUGR 1999 CI 34B *Incidents CMUGR 1999, CI 34(2) Repealed 4/7/2003
	Coal Mine Health and Safety Act 2002 Coal Mine Health and Safety Regulation 2006	CMHSA 2002 CMHSR 2006	23/12/2006	Current	CMHS	CMHSR 2006 CI 55 CMHSR 2006 CI 56(1) Non Spec Acc Ending in Fat/Injury
Non-Coal	Mines Inspection Act 1901 Mines Inspection Regulation 1999 Mines Inspection General Rule 2000	MIA 1901 MIR 1999 MIGR 2000	1/02/1902 30/07/1999 01/09/2000	Repealed	*MIA	*1994 Emergency MIA *Minor Accident MIA *Pre Sept 2000 Dangerous Incident MIA *Serious Injury MIA *Dangerous Incident *Non Spec Acc Ending in Fat/Injury
	Mine Health and Safety Act 2004 Mine Health and Safety Regulation 2007	MHSA 2004 MHSR 2007	1/09/2008	Current	MHS	MHSR 2007 CI 145 MHSR 2007 CI 146(1) Non Spec Acc Ending in Fat/Injury
Petroleum	Petroleum (Onshore) Schedule 1992	POSch 1992	08/1992	Current	POSch	POSch 1992
All	Explosives Regulation 2005	EXPLR 2005	1/09/2005	Current	Explosives	Explosives Regulation 2005
	Not Applicable				N/A	Complaint High Potential Incident

* indicates repealed legislation

Appendix 4 Serious bodily injury types and relevant legislation

Figure 57
Coal serious bodily injury (SBI) clauses under former and current legislation

Serious Bodily Injury (SBI) – Coal	
Coal Mines (General) Regulation 1999 Clause 85	Coal Mine Health & Safety Regulation 2006 Clauses 55 and 57
a) a fracture of the skull, jaw, spine, pelvis, arm, shoulder-blade, collar-bone, forearm, thigh, leg, knee cap, ankle or ribs	55, 57(a)(ii) any fracture other than a fracture of a finger, toe, hand or foot
(b) a dislocation of the shoulder, elbow, hip, knee or spine	-
(c) an amputation of the hand or foot or a substantial part of the hand or foot	55, 57(a)(i) an amputation of one or more fingers or toes or any other part of a hand or foot
(d) the serious impairment or loss of sight of an eye	55, 57(a)(iii) loss of sight of an eye,
(e) an internal haemorrhage receiving hospital treatment	55, 57(a)(iv) an internal haemorrhage receiving hospital treatment,
(f) burns receiving treatment from a registered medical practitioner	55(c)(v) serious burns to a person
(g) an injury involving injection of hydraulic fluid	55, 57(a)(v) the injection of fluid (including hydraulic fluid, oil, air or water) under pressure
(h) asphyxia.	55, 57(a)(vi) asphyxia

Figure 58
Non-Coal serious injury (SI) clauses under former and current legislation

Serious Injury (SI) – Non-Coal	
Mines Inspection Act 1901 Section 47	Mine Health & Safety Regulation 2007 Clause 145
(a) a fracture of the skull, jaw, spine, pelvis, arm, shoulder-blade, collar-bone, forearm, thigh, leg, knee cap, ankle or ribs	145(a)(ii) any fracture other than a fracture of a finger, toe, hand or foot
(b) a dislocation of the shoulder, elbow, hip, knee or spine	-
(c) an amputation of the hand or foot or a substantial part of the hand or foot	145(a)(i) the amputation of one or more fingers or toes or any other part of a hand or foot
(d) the loss of sight of an eye	145(a)(iii) loss of sight of an eye
(e) an internal haemorrhage requiring hospital treatment	145(a)(iv) an internal haemorrhage receiving hospital treatment
(f) burns requiring hospital treatment	145(c)(iv) serious burns to a person
-	145(a)(v) the injection of fluid under pressure
(g) asphyxia	145(a)(vi) asphyxia
(h) any other kind of injury prescribed by the general rules	-

Figure 59
Petroleum (Onshore) serious injury (SI) clauses under current legislation

Serious Injury (SI) – Petroleum (Onshore)
Petroleum (Onshore) Schedule 1992
301(1) an injury which requires immediate attention by a medical practitioner

Appendix 5 Notifiable injury outcomes and relevant legislation

Figure 60
Notifiable injury outcomes under current legislation

Notifiable Outcome	Legislation		
Fatality	CMHSA 2002	S 110(1)(a)	any incident at the coal operation site that has resulted in a person being killed
		S 110 (2)(a)	any incident at the exploration site that has resulted in a person being killed
	MHSA 2004	S 88(1)(a)	any incident at the mine that has resulted in a person being killed
Lost consciousness	CMHSR 2006	CI 55(a)	an injury to a person that results (at any time after the injury) in any of the following: (vii) the loss of consciousness of the person caused by impact of physical force, exposure to hazardous substances, electric shock or lack of oxygen
		CI 57(a)	an injury to a person that results (at any time after the injury) in any of the following: (vii) the loss of consciousness of the person caused by impact of physical force, exposure to hazardous substances, electric shock or lack of oxygen
	MHSR 2007	CI 145(a)	an injury to a person that results (at any time after the injury) in any of the following: (vii) the loss of consciousness of the person caused by impact of physical force, exposure to hazardous substances, electric shock or lack of oxygen
Hospital inpatient admission	CMHSR 2006	CI 55(b)	an event that results (at any time after the event) in the admission of a person to hospital as an in-patient
		CI 57(b)	an event that results (at any time after the event) in the admission of a person to hospital as an in-patient
	MHSR 2007	CI 145(b)	an event that results (at any time after the injury) in the admission of a person to hospital as an in-patient
Entrapment	CMHSR 2006	CI 55(c)	any of the following events or circumstances that present an immediate threat to life or of permanent incapacitating injury: (iii) entrapment of a person
	MHSR 2007	CI 145(c)	any of the following events or circumstances that present an immediate threat to life or of permanent incapacitating injury: (iii) entrapment of a person

Notifiable injury outcomes under current legislation continued

Notifiable Outcome	Legislation		
<p>>=7 days lost time and/or alternative duties</p>	<p>CMHSR 2006</p>	<p>CI 56(1)(a)</p>	<p>an injury to a person that results in the person being unfit, for a continuous period of at least 7 days, to attend the person's usual place of work, to perform his or her usual duties at his or her place of work or, in the case of a non-employee, to carry out his or her usual work activities (where that unfitness is supported by a medical certificate)</p>
		<p>CI 56(1)(b)</p>	<p>an illness of a person that is related to work processes and results in the person being unfit, for a continuous period of at least 7 days, to attend the person's usual place of work or to perform his or her usual duties at that place of work (where that unfitness is supported by a medical certificate)</p>
		<p>CI 56(1)(c)</p>	<p>any incidence of violence at a place of work that results in an employee being unfit, for a continuous period of at least 7 days, to attend the employee's usual place of work or to perform his or her usual duties at that place of work (where that unfitness is supported by a medical certificate)</p>
	<p>MHSR 2007</p>	<p>CI 146(1)(a)</p>	<p>an injury to a person that results in the person being unfit, for a continuous period of at least 7 days, to attend the person's usual place of work, to perform his or her usual duties at his or her place of work or, in the case of a non-employee, to carry out his or her usual work activities (where that unfitness is supported by a medical certificate)</p>
		<p>CI 146(1)(b)</p>	<p>an illness of a person that is related to work processes and results in the person being unfit, for a continuous period of at least 7 days, to attend the person's usual place of work or to perform his or her usual duties at that place of work (where that unfitness is supported by a medical certificate)</p>
		<p>CI 146(1)(c)</p>	<p>any incidence of violence at a place of work that results in an employee being unfit, for a continuous period of at least 7 days, to attend the employee's usual place of work or to perform his or her usual duties at that place of work (where that unfitness is supported by a medical certificate)</p>

Appendix 6 COMET assessment event subtypes

Figure 61
COMET assessment event subtypes

Assessment Event Subtype	Description
Airborne Dust	Evaluation of the implementation of an operation's safety systems and procedures relevant to the control and analysis of airborne dust at the mine.
Audit	Formal evaluation of site activities, plant and equipment and management systems in relation to compliance with legislation, standards and guidelines.
Closure	Evaluation of the implementation of an operation's safety systems and procedures relevant to the closure or abandonment of a mine or part of a mine.
Equipment	Formal or informal inspection of equipment or plant in relation to compliance with legislation, standards and guidelines.
Explosion Suppression	Sampling inspections, analysis and reports of roadway dust conditions.
Inspection (Mine Safety)	Formal or informal inspection of site activities, plant and equipment and management systems relevant to the continued safe operation of a mine or health, safety and welfare of persons who work at the mine.
Investigation	Investigation of a mine incident requiring the collection and analysis of information obtained from premises off-site or not at the mine.
Management Plans (Safety)	Desk top review of Mine Safety Management Plans in relation to compliance with legislation, standards and guidelines.
Resource Recovery (Safety)	Evaluation of information on planning, operation and geology in relation to the safe operation of a mine or health, safety and welfare of persons who work at the mine.
Seminar/Workshop	Review of information presented on safety matters relating to the mining industry.
Verification	Verification of the implementation of an operation's Mine Safety Management Plan safety systems and procedures

NB Use of Assessment Event Subtypes may change over time due to changes in recording approach.

Appendix 7 Enforcement and advice/improvement notice categories and relevant legislation

Figure 62
Enforcement and advice/improvement notice categories and types

Enforcement and Advice Notice Category	Legislation and Enforcement and Advice Notice Type		
Advice	*CMRA 1982	S 61	Inspector or mine safety officer to inform mine management of exercise of certain powers
	CMHSA 2002	S 150	Bringing of concerns regarding health, safety or welfare to the attention of operators
	*MIA	S 36B	Inspector or mine safety officer to inform mine management of certain matters
	MHSA 2004	S 131	Bringing of concerns regarding health, safety or welfare to the attention of operators
Improvement	*OHSA 2000	S 91	Issue of improvement notices
	WHSА 2011	S 191	Issue of improvement notices
Prohibition	*CMRA 1982	S 63	Inspector may impose prohibitions or restrictions or direct evacuation or closure of mine
	CMHSR 2006	CI 51	Chief Inspector may impose prohibitions or restrictions or direct evacuation or closure of coal operation
	*MIA	S 37	Notice to be given of cause of danger
		S 37A	Order to withdraw persons from mine
	MHSR 2007	CI 158	Chief Inspector may impose prohibitions or restrictions or direct evacuation or closure of mine
	WHSА 2011	S 195	Power to issue prohibition notices
Investigation	*OHSA 2000	S 62	Power of Inspectors to obtain information, documents and evidence
		S 70	Notice of taking or dismantling plant, substances or other things
		S 72	Receipt for things taken
		S 89	Investigation notice to stop plant or prevent disturbance of premises to allow investigation
	WHSА 2011	S 155	Powers of regulator to obtain information
		S 171	Power to require production of documents and answers to questions
		S 177	Powers supporting seizure
		S 178	Receipt for seized things
		S 179	Forfeiture of seized things
		S 183	Inspector to give notice of damage
S 198	Issue of a non-disturbance notice		
Explosives	EXPLR 2005	CI 99	Certain powers of inspectors and police officers

*indicates repealed legislation

Appendix 8 Sources of data

Figure 63
Sources of data

Data	Mining Sector	Source
Employees Hours Worked	Coal	<ul style="list-style-type: none"> Coal Services Pty Ltd to 2006-07 NSW Coal Industry Profiles to 2006-07 NSW Trade & Investment Quarterly Workplace Injury Reports – Coal Mine Health and Safety Regulation 2006 CI 206 from 2007-08
	Metalliferous Extractives	<ul style="list-style-type: none"> Minerals Council of Australia Safety Performance Reports to 2004-05 NSW Trade & Investment Mineral Royalty Returns to 2006-07 NSW Trade & Investment Quarterly Workplace Injury Reports – Mine Health and Safety Regulation 2007 CI 155 from second quarter 2008-09
LTIs	Coal	<ul style="list-style-type: none"> Coal Services Pty Ltd to 2006-07 NSW Trade & Investment Quarterly Workplace Injury Reports – Coal Mine Health and Safety Regulation 2006 CI 206 from 2007-08
	Metalliferous Extractives	<ul style="list-style-type: none"> Minerals Council of Australia Safety Performance Reports to 2004-05 NSW Trade & Investment Monthly Injury (Non Serious) Forms - Mines Inspection General Rule 2000 CI 26 NSW Trade & Investment Incident and Injury Notifications to first quarter 2008-09 NSW Trade & Investment Quarterly Workplace Injury Reports – Mine Health and Safety Regulation 2007 CI 155 from second quarter 2008-09
MTIs RDIs	Coal	<ul style="list-style-type: none"> NSW Trade & Investment Quarterly Workplace Injury Reports – Coal Mine Health and Safety Regulation 2006 CI 206 from 2007-08
	Metalliferous Extractives	<ul style="list-style-type: none"> NSW Trade & Investment Quarterly Workplace Injury Reports - Mine Health and Safety Regulation 2007 CI 155 from second quarter 2008-09
Incidents Fatalities Serious Bodily Injuries Notifiable Injury Outcomes	All	<ul style="list-style-type: none"> NSW Trade & Investment Incident and Injury Notifications
Assessments Enforcement and Advice Notices	All	<ul style="list-style-type: none"> NSW Trade & Investment COMET Mine Safety database