

INVESTIGATION INFORMATION RELEASE

SEPTEMBER 2019

Collision between dozer and light vehicle

Incident date: 12 August 2019

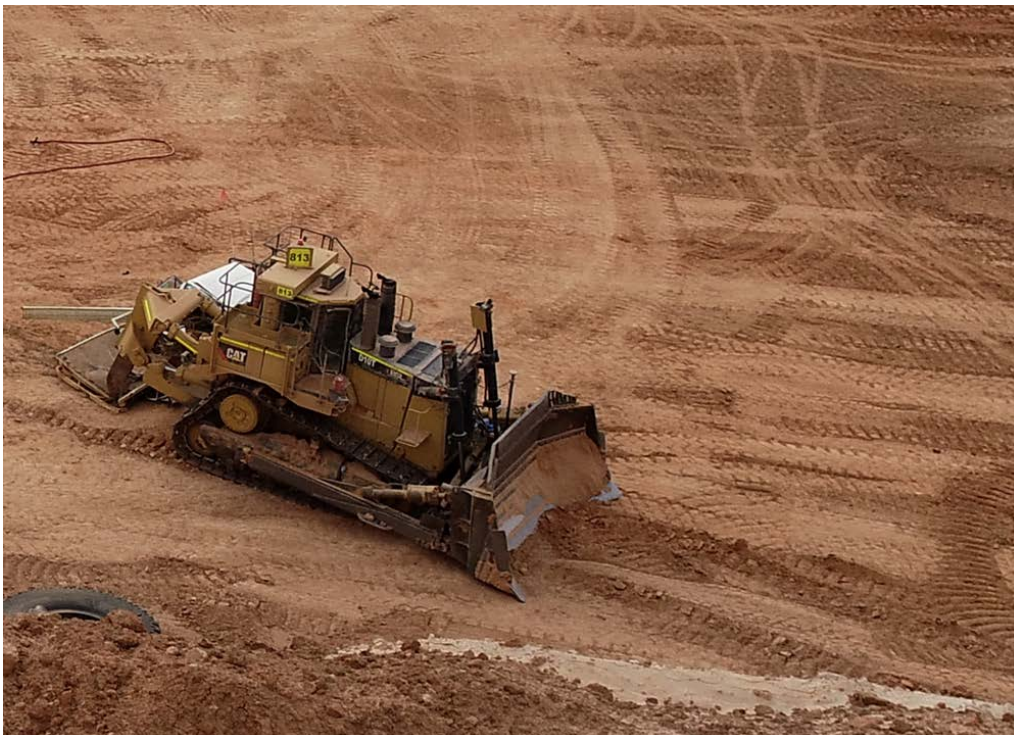
Event: Fatality at Snapper Mineral Sands Mine

Location: 260km south of Broken Hill, NSW

Overview

A worker suffered fatal injuries arising from a collision between a dozer and a light vehicle at the Snapper Mineral Sands Mine on 12 August 2019. The NSW Resources Regulator has begun an investigation into the incident.

Figure 1 Photograph of collision between D10 dozer and light vehicle



The mine

Snapper Mineral Sands Mine is operated by Tronox Mining Australia (formerly Cristal Mining Australia Limited). The mine is 85 kilometres north of Mildura and 40 kilometres west of Pooncarie and about 260 kilometres south of Broken Hill in western NSW.

Basin Sands Logistics Pty Ltd is contracted to carry out road maintenance and load and haul mineral sand concentrate at the mine.

The incident

A contract worker driving a light vehicle entered the western tip head area, to deliver a water bottle to a dozer operator about 4.45pm on 12 August. The dozer operator was reversing and he was unaware the light vehicle was in close proximity. The two vehicles collided resulting in fatal injuries to the light vehicle driver.

Safety observations

Mine and petroleum site operators have a duty to identify hazards and manage risks to health and safety associated with the operation of mobile plant in accordance with the provisions of the *Work Health and Safety Act 2011* and *Work Health and Safety (Mines and Petroleum Sites) Act 2013* and Regulations.

Mobile plant interactions in mines, particularly between light vehicles and heavy mobile plant such as dozers, are a well-known risk to the industry. Mine operators must identify, implement and maintain appropriate no-go zones and separation distances between light vehicles and heavy mobile plant.

Mine operators should consider:

- eliminating light and heavy vehicle interactions by establishing designated parking locations for light vehicles near working areas
- using available technology to control vehicle and mobile plant interactions such as proximity detection and collision avoidance systems
- installing visual aids in heavy vehicles such as reversing cameras and rear and sideview mirrors
- the adequacy of surface transport management plans, including radio and other communications systems and protocols on site
- human factors such as environmental, organisational and job factors that may impact upon heavy and light vehicle interactions.

The investigation

NSW Police and emergency services responded to the incident.

The Regulator has commenced an investigation to determine the cause and circumstances of the incident. The mine operator and contractor are cooperating with the investigation. A report will be published when the investigation is concluded.

A report will also be prepared for the NSW Coroner.

Further information

Please refer to the following guidance materials:

- MDG 15 – [Mobile and transportable plant for use on mines and petroleum sites](#)
- Safety Bulletin – [Positive communication failures result in collisions](#)
- Investigation Information Release – [Light vehicle crushed by D11 dozer](#)

About this information release

The Regulator has issued this information to draw attention to the occurrence of a fatal incident in the mining industry. Further information may be published as it becomes available.

Go to resourcesregulator.nsw.gov.au to:

- learn more about our work on major investigations and emergency response
- view our publications on other major investigations
- sign-up to receive mine safety news.

© State of New South Wales through the NSW Department of Planning, Industry and Environment 2019.

This publication is copyright. You may download, display, print and reproduce this material in an unaltered form only (retaining this notice) for your personal use or for non-commercial use within your organisation. To copy, adapt, publish, distribute or commercialise any of this publication you will need to seek permission from the NSW Department of Planning, Industry and Environment.

Disclaimer: The information contained in this publication is based on knowledge and understanding at the time of writing (September 2019). However, because of advances in knowledge, users are reminded of the need to ensure that information upon which they rely is up to date and to check currency of the information with the appropriate officer of the NSW Department of Planning, Industry and Environment or the user's independent advisor.

DOCUMENT CONTROL

CM9 reference	DOC19/709696
Mine safety reference	IIR19-11
Date published	6 September 2019
Authorised by	Chief Investigator Major Safety Investigations