

WEEKLY INCIDENT SUMMARY

Week ending Friday 4 February 2022

This incident summary provides information on reportable incidents and safety advice for the NSW mining industry. To report an incident to the NSW Resources Regulator: phone 1300 814 609 24 hours a day, 7 days a week.

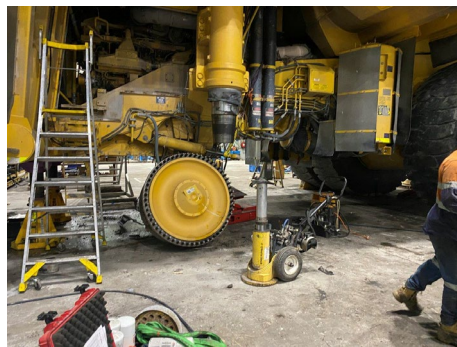
At a glance

High level summary of emerging trends and our recommendations to operators.

TYPE	NUMBER
Reportable incident total	37
Summarised incident total	4

Summarised incidents

INCIDENT TYPE	SUMMARY	COMMENTS TO INDUSTRY
Dangerous incident IncNot0041499 Open cut coal	Three workers were in the process of removing the front wheel hub from a Komatsu 930E dump truck. The wheel hub fell to the ground after the tapered connection between the wheel hub and spindle was released. The hub, weighing about 4.8 tonnes, fell from the jack that was set up to support it. The workers narrowly avoid the falling hub.	Workers should ensure that components are adequately supported and secured to prevent unplanned movement during removal. The use of slings, support cradles or jigs appropriately rated for the suspended load, should be considered. Documented procedures providing step by step instructions for the task should be provided to workers. Supervisors should ensure that the approved procedures are followed.



Dangerous incident
IncNot0041501
Open cut coal
Roads or other
vehicle operating
areas



A haul truck lost control on a wet and muddy area of a roadway and collided with a stationary haul truck. The truck had stopped due to the poor roadway conditions. The ground was wet due to a machine having been washed down in the area.



Vehicle collisions on mine sites continue to be a source of concern for the Resources Regulator.

A recently published report shows that in relation to a high number of vehicle incidents in the surface coal sector:

- documentation relating to controls for roads or other vehicle operating areas was not relevant, current, or readily available
- active roads and intersections were not constructed to site standard or design guidelines.

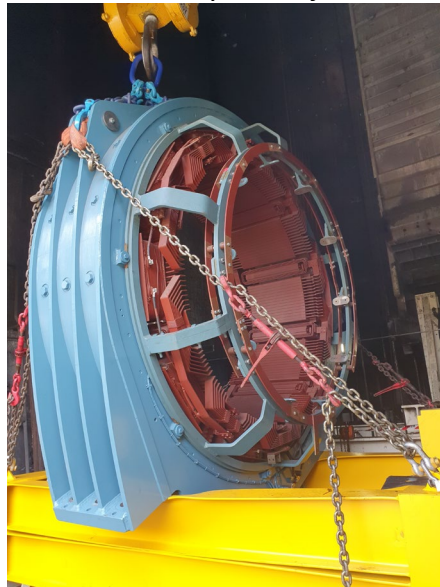
Mine operators should:

- have verification processes in place to measure compliance with site road design and construction procedures
- ensure that supervision arrangements are adequate and area inspections are

detailed enough to identify all the hazards.
All personnel who operate rubber-tyred, heavy mining equipment should be trained on driving techniques in wet conditions.
Refer to:
[Managing roads or other vehicle operating areas in the surface coal sector](#)

Dangerous incident
IncNot0041512
Underground coal

While lifting a motor stator up to the motor room of a winder, the overhead motor room crane stopped when the load was about 10m from ground level. The crane brake failed to hold the load, causing the load to descend in an uncontrolled manner to the ground floor, landing on the transport frame. No-go zones were implemented for the task and nobody was injured.



The cause of this incident is under investigation and further information may be published later.

Incidents such as this serve as a reminder of the need to have no-go zones and/or safe standing zones in place where there is a possibility for energy release such as objects falling from a height.

Dangerous incident
IncNot0041515
Coal preparation
Roads or other
vehicle operating
areas

An articulated dump truck collided with a conveyor support structure.

Structures must be protected from impact with mobile plant. The extension of headboards and trays should be considered during the design of barriers and guides. Mobile plant operators must maintain situational awareness



and remain vigilant to manage the risk of collisions.

Other publications of interest

The incidents are included for your review. The NSW Resources Regulator does not endorse the findings or recommendations of these incidents. It is your legal duty to exercise due diligence to ensure the business complies with its work health and safety obligations.

PUBLICATION	ISSUE/TOPIC
	National (other, non-fatal)
Resources Health and Safety	QLD - RSHQ Guidance Note - Autonomous mobile machinery RSHQ has released a guidance note to provide practical guidance to the mine operators and site senior executives (SSEs) of the requirements for safe introduction and use of autonomous mobile machinery and vehicles. It is designed to provide guidance on design, planning, change management, implementation and safe operation systems for mobile autonomous and semi-autonomous systems used in surface and underground coal mines. There is a focus on the identification of the unique risk profiles in relation to new or existing autonomous mining systems. The guidance should be followed if you have functions and responsibilities for planning, designing, implementing, and maintaining mobile autonomous mining systems. Details

Note: While the majority of incidents are reported and recorded within a week of the event, some are notified outside this time period. The incidents in this report therefore have not necessarily occurred in a one-week period. All newly recorded incidents, whatever the incident date, are reviewed by the Chief Inspector and senior staff each week. For more comprehensive statistical data refer to our annual performance measures reports.

© State of New South Wales through Regional NSW 2022 You may copy, distribute, display, download and otherwise freely deal with this publication for any purpose, provided that you attribute Regional NSW as the owner. However, you must obtain permission if you wish to charge others for access to the publication (other than at cost); include the publication in advertising or a product for sale; modify the publication; or republish the publication on a website. You may freely link to the publication on a departmental website.

Disclaimer: The information contained in this publication is based on knowledge and understanding at the time of writing (February 2022) and may not be accurate, current or complete. The State of New South Wales (including Regional NSW), the author and the publisher take no responsibility, and will accept no liability, for the accuracy, currency, reliability or correctness of any information included in the document (including material provided by third parties). Readers should make their own inquiries and rely on their own advice when making decisions related to material contained in this publication.

DOCUMENT CONTROL

CM9 reference RDOC22/12376

Mine safety reference ISR22/05

Date published 11 February 2022

Approved by Deputy Chief Inspector
Office of the Chief Inspector