

WEEKLY INCIDENT SUMMARY

Week ending Friday 14 January 2022


This incident summary provides information on reportable incidents and safety advice for the NSW mining industry. To report an incident to the NSW Resources Regulator: phone 1300 814 609 24 hours a day, 7 days a week.

At a glance

High level summary of emerging trends and our recommendations to operators.

TYPE	NUMBER
Reportable incident total	38
Summarised incident total	3

Summarised incidents

INCIDENT TYPE	SUMMARY	COMMENTS TO INDUSTRY
Dangerous incident IncNot0041395 Quarry	<p>A dump truck with its tray raised hit and pulled down live overhead powerlines. The truck continued to drive forward.</p> 	<p>Operators should consider the risks associated with all activities that may occur near overhead power lines, irrespective of the frequency or complexity of the activity.</p> <p>Consideration should be given to all controls to prevent equipment encroaching on safe approach distances for high voltage overhead power lines, including:</p> <ul style="list-style-type: none"> • alternate travel routes or work sites • limits on maximum height for any equipment that may travel, or be transported

below, or work near overhead power lines

- warning signs or barriers (temporary or permanent) for overhead power lines (include safe height limits).

Refer to Safety Alert: [SA20-08](#)

[Drill rig contacts 22kV power line](#)

Dangerous incident
IncNot0041408
Open cut coal
Roads or other
vehicle operating
areas



A light vehicle failed to stop and give way to a haul truck at a T-intersection when the truck was turning right. The vehicle and haul truck stopped 18 metres apart. There were no injuries.



Mine operators must ensure they have appropriate controls in place to manage the risks associated with heavy and light vehicle interactions.

Mine operators must ensure all roadways, intersections and park-up areas are designed, constructed, and maintained to safely manage interactions between mobile plant and light vehicles.

Refer to Safety Alert: [SA20-09](#)

[Operating mobile plant - Incidents and near misses](#)

Dangerous incident
IncNot0041417
Open cut coal
Roads or other
vehicle operating
areas



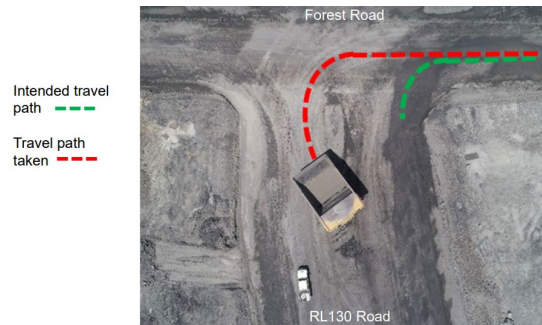
A truck hauling reject incorrectly turned left into an outgoing lane intersection. A light vehicle was approaching the intersection. The operator of vehicle identified the truck and came to a stop before the intersection. The truck identified the vehicle as it began its left-hand turn, at which point the vehicle was about 25 metres away from the intersection.

Mine operators must ensure they have appropriate controls in place to manage the risks associated with heavy and light vehicle interactions.

Mine operators must ensure all roadways, intersections and park up areas are designed, constructed, and maintained to safely manage interactions between mobile plant and light vehicles.

Refer to Safety Alert: [SA20-09](#)

[Operating mobile plant - Incidents and near misses](#)



Note: While the majority of incidents are reported and recorded within a week of the event, some are notified outside this time period. The incidents in this report therefore have not necessarily occurred in a one-week period. All newly recorded incidents, whatever the incident date, are reviewed by the Chief Inspector and senior staff each week. For more comprehensive statistical data refer to our annual performance measures reports.

© State of New South Wales through Regional NSW 2022 You may copy, distribute, display, download and otherwise freely deal with this publication for any purpose, provided that you attribute Regional NSW as the owner. However, you must obtain permission if you wish to charge others for access to the publication (other than at cost); include the publication in advertising or a product for sale; modify the publication; or republish the publication on a website. You may freely link to the publication on a departmental website.

Disclaimer: The information contained in this publication is based on knowledge and understanding at the time of writing (January 2022) and may not be accurate, current or complete. The State of New South Wales (including Regional NSW), the author and the publisher take no responsibility, and will accept no liability, for the accuracy, currency, reliability or correctness of any information included in the document (including material provided by third parties). Readers should make their own inquiries and rely on their own advice when making decisions related to material contained in this publication.

DOCUMENT CONTROL

CM9 reference DOC22/31269

Mine safety reference ISR22-02

Date published 21 January 2022

Approved by Deputy Chief Inspector
Office of the Chief Inspector