

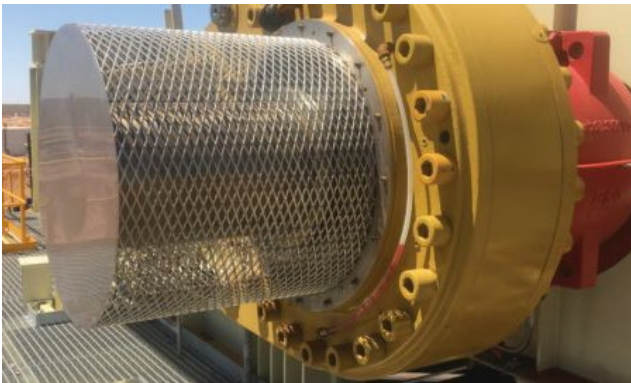
FACT SHEET

Assessment program - Entanglement – Metalliferous mines and large quarries

June 2021

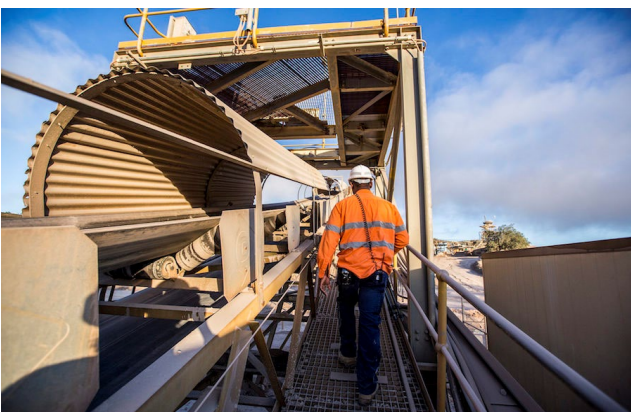
The Resources Regulator is commencing a program of planned inspections and targeted assessments across metalliferous mines and large quarries which will be focussing on the risk of entanglement.

Entanglement is a hazard which has the potential to cause serious and/or fatal injuries to workers if not controlled effectively. This fact sheet is primarily based on the critical controls for entanglement risks within the metalliferous and quarry sector and should be considered by mine operators when assessing the risk at their operation.



Equipment safeguarding

Guards prevent people accessing entanglement hazards.



Safe standing zones

People remain a safe distance from unguarded entanglement hazards.



Isolation standards

Prevent equipment starting while people are working near entanglement hazards.



Emergency stops

Enable stopping of the plant if a worker becomes entangled.

Considerations

Arising from investigations into entanglement related incidents, it is evident that non-compliance to these key control measures has contributed to incident outcomes, which include both severe and fatal injuries to workers. When identifying and implementing control measures, mine operators are reminded to apply the hierarchy of controls to ensure health and safety risks are minimised as far as is reasonably practicable.

FACT SHEET

Assessment program - Entanglement – Metalliferous mines and large quarries

Other relevant safety alerts and bulletins published by the NSW Resources Regulator:

| DATE PUBLISHED | REFERENCE | TITLE |
|----------------|--------------------------------------|---|
| Jun 2020 | Investigation Information Release | Worker's arm injured in belt press filter |
| Aug 2019 | Code of Practice | Managing the risks of plant in the workplace |
| Nov 2018 | SB18-18 | Drill rig safety |
| Sep 2016 | Code of Practice | Mechanical engineering control plan |
| Mar 2008 | SA08-05 | Miner's arm injured using drill rig |
| Nov 2006 | SA06-19 | Operator's hands injured in conveyor at quarry |
| Aug 2002 | SA 02-12 | Quarry operators arm caught in unguarded conveyor |

© State of New South Wales through Regional NSW 2021. You may copy, distribute, display, download and otherwise freely deal with this publication for any purpose, provided that you attribute Regional NSW as the owner. However, you must obtain permission if you wish to charge others for access to the publication (other than at cost); include the publication in advertising or a product for sale; modify the publication; or republish the publication on a website. You may freely link to the publication on a departmental website.

Disclaimer: The information contained in this publication is based on knowledge and understanding at the time of writing (June 2021) and may not be accurate, current or complete. The State of New South Wales (including Regional NSW), the author and the publisher take no responsibility, and will accept no liability, for the accuracy, currency, reliability or correctness of any information included in the document (including material provided by third parties). Readers should make their own inquiries and rely on their own advice when making decisions related to material contained in this publication.

CM9 reference